

CATALOG

2023

33

Years

Just about every part you require for
LPG/NG & Industrial Gas System

www.mahamulti.com

Since 1990



MAHARASHTRA
MULTI DISTRIBUTORS LTD



CATALOG 2023

Works : Plot No. 98/A-30, Hadapsar Industrial Estate, (Behind Kirlosker Pneumatic), Pune - 411013. India
Tel.: +91 9168184488 Email : retail@mahamulti.com

Retail Outlet: 11, Kaveri Apartments, 896 Nana Peth, (Opp. HDFC Bank-Quarter Gate Branch),
Pune - 411 002. India. Tel.: +91 7030713366 / 9607108811 Email : domestic@mahamulti.com

www.mahamulti.com

Success is a journey, not a destination.

QUALITY POLICY

VISION

To provide the highest quality of products and services that combine performance with value pricing while establishing a long standing successful relation with our customers and suppliers. To constantly strive to meet and exceed our customers' needs and expectations of quality, price, service and energy solutions. To stay ahead of the competition by introducing new products and services based on the current and future needs of our customers and changing market demands.

OUR PRINCIPLE

**Rather lose money
than the confidence of customer**

MISSION

To provide work environment where our employees can meet their fullest potential to serve our customers and thrive in an atmosphere of excellence while doing the same. Striving to set the Industry Standards in offering the best service and maintaining a superior level of integrity in interactions with our customers while conducting our business as model corporate citizens.



**'We promise only what we can deliver. Then,
deliver more than what we have promised'**

QUALITY POLICY

We at MAHARASHTRA MULTI DISTRIBUTORS LTD. are committed to deliver the products, to our external and internal customers satisfying their clearly established requirements all the time. Quality improvement is our basic business motive and everyone's job. To achieve this, we will evolve processes and create an environment that naturally inspires all our people and suppliers to prevent defects. We commit ourselves, as a company and as individuals to "do it right, the first time, ever time"

Quality comes first.

VANAZ Products 4 - 26

Valves	5
Safety Relief Valves	6 - 7
Flame Arrestor, Auto Changeover	8
Service Regulators	9
Preset Pressure Reducers	10
Adjustable Regulators High Pressure	11 - 14
Industrial Gas Regulators	15 - 16
Pilot Operated Regulators	16
Preset Pressure Reducers 2 nd Stage	17 - 20
Filters	21
Slam Shut Off Valves	22 - 23
Ammonia Pressure Regulators	24
Hight Pressure Cylinder Valves	25
Vel Filters	26

METERS 27 - 31

Meter Fittings	28 - 29
Commercial Gas Meters	30
Industrial Gas Meters & EVC	31

MANIFOLDS & Fittings 32 - 53

Industrial Gas Manifolds	33
Industrial Gas Regulators	34
VOT Manifolds	35
VOT Manifolds Fittings	36
LOT Manifolds	37
LOT Manifolds Fittings	38
LPG LOT 450 kg Manifolds	39
LPG LOT 450 kg Fittings	40
Brass Fittings	41
Laboratory Fittings	42
LOT Systems	43
Vaporisers	44 - 45
Leak Detection	45 - 46
Gas trains	47
Pressure Switches & Dirt Traps	48
Flame Arrestors & Pressure Gauges	49
Electronic Panels	50
Bulk Tank Fittings	51
Pigtails & Hoses	52 - 53

VALVES 54 - 53

Solenoid Valves & QT Ball Valves	55
Needle Valves	56
Ball Valves	57 - 58

TORCHES 59 - 61

Narcisi	60
Swaraj	60
Sievert	61

BURNERS 62 - 72

Infra Red	63
Torch Type	64
Ring Type	65
Lotus Type	66
Ribbon Type	67 - 68
Fishtail	68
Dum Biryani	69
Bulk Heating	70
Automatic	70
Blower	71

DOMESTIC EQUIPMENT 72 - 75**CONTACT US 76**

The specifications and availability of the products in this Catalog may vary from time to time due to continuous development and upgrades. While all efforts have been taken to document every detail to perfection, we request our clients to verify the same at the time of making a purchase. All images, brands and designs are subject to copyrights.

01

VANAZ



Needle valves are used as flow control devices. We have two types of needle valves suitable for high pressure applications upto 250 kg/cm². V 6104 has inlet and outlet at right angle and V 6105 has inlet outlet in straight line. These needle valves can be used for all gases and the material of construction will depend on the type of gas.



PRODUCT	Needle Valve High Pressure Right Angle
PRODUCT CODE	V-6104
SPECIFICATIONS	Working Pressure 250 Bar
	Test Pressure 375 Bar
	End Connection ¼", ⅜" BSPM
	Medium CNG, Hydrogen, Air, Nitrogen, Oxygen, Acetylene, Argon
BRANDS AVAILABLE	VANAZ



PRODUCT	Needle Valve High Pressure Straight
PRODUCT CODE	V-6105
SPECIFICATIONS	Working Pressure 250 Bar
	Test Pressure 375 Bar
	End Connection ¼", ⅜", ½" BSPM
	Medium CNG, Hydrogen, Air, Nitrogen, Oxygen, Acetylene, Argon
BRANDS AVAILABLE	VANAZ

Line valves are used as isolation valve. V 4913 is having brass forged body and metallic seat. It is suitable for high pressure application working pressure 250 kg/cm².



PRODUCT	Line Valve Female
PRODUCT CODE	V-4913 II
SPECIFICATIONS	Working Pressure 250 Bar
	Test Pressure 375 Bar
	End Connection 1" BSPF
	Medium CNG, Hydrogen, Air, Nitrogen, Oxygen, Carbon Dioxide
BRANDS AVAILABLE	VANAZ



PRODUCT	Line Valve Male
PRODUCT CODE	V-4913
SPECIFICATIONS	Working Pressure 250 Bar
	Test Pressure 375 Bar
	End Connection 1½" BSPM
	Medium CNG, Hydrogen, Air, Nitrogen, Oxygen, Acetylene, Argon
BRANDS AVAILABLE	VANAZ

A safety relief valve opens automatically when pressure increases and shuts off as soon as the pressure decreases below the set limit V 7713 and V7715 have metal to metal seat and are suitable for high pressure applications upto 200 bar. V7732, V 7743, V 7744 and V 7745 have soft seat and are available at prescribed set pressures. R 4105 can be used for low pressure applications. We can deliver SRV for all gases and material of construction will depend on the type of the gas.



PRODUCT	Safety Relief Valve	
PRODUCT CODE	V-7713 / 7715	
SPECIFICATIONS	Set Pressure Range	20 to 200 Bar
	End Connection	½", ¾", 1" BSPF as per requirement.
	Medium	CNG, LPG, Carbon Dioxide, Nitrogen, Air, Hydrogen, Argon etc.
	Body	SS
BRANDS AVAILABLE	VANAZ	



PRODUCT	Safety Relief Valve	
PRODUCT CODE	V-7743	
SPECIFICATIONS	Set Pressure	up to 1 to 10 bar
	End Connection	½", ¾" BSP as per requirement. M/F
	Medium	CNG, LPG, Carbon Dioxide, Nitrogen, Air, Argon etc.
	Body	Brass
BRANDS AVAILABLE	VANAZ	



PRODUCT	Safety Relief Valve	
PRODUCT CODE	V-7744	
SPECIFICATIONS	Maximum Set Pressure	10 to 110 Bar
	End Connection	½", ¾", 1" BSPF as per requirement.
	Medium	CNG, LPG, Carbon Dioxide, Nitrogen, Air, Argon, Oxygen etc.
	Body	Brass
BRANDS AVAILABLE	VANAZ	



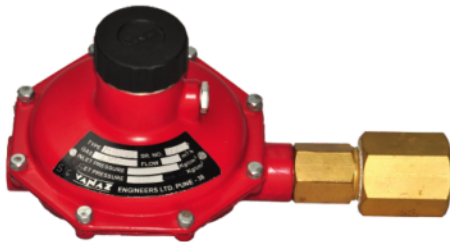
PRODUCT	Safety Relief Valve	
PRODUCT CODE	V-7745	
SPECIFICATIONS	Set Pressure range	0.3 to 12 bar
	End Connection	1" BSPF
	Medium	LPG, Natural Gas, Nitrogen, Oxygen, Carbon Dioxide
	Body	CS
BRANDS AVAILABLE	VANAZ	



PRODUCT	Safety Relief Valve	
PRODUCT CODE	V-7738 Diaphragm Type	
SPECIFICATIONS	Set Pressure	0.03 to 0.5 Bar
	End Connection	1", 1½" or 2" BSPF
	Medium	Natural Gas, LPG, Carbon Dioxide, Nitrogen, Air etc.
BRANDS AVAILABLE	VANAZ	



PRODUCT	Safety Relief Valve	
PRODUCT CODE	V-7732	
SPECIFICATIONS	Set Pressure range	0.5 to 12 bar
	End Connection	1½" or 2" BSPF
	Medium	LPG, Natural Gas, Carbon Dioxide, Nitrogen, Oxygen
BRANDS AVAILABLE	VANAZ	



PRODUCT	Safety Relief Valve	
PRODUCT CODE	R - 4105	
SPECIFICATIONS	Set Pressure range	0.03 to 0.5 bar
	End Connection	½" BSPF
	Medium	LPG, Natural Gas, Nitrogen, Oxygen, Carbon Dioxide
BRANDS AVAILABLE	VANAZ	

Flame arrestors are used to arrest the flame from reaching the highly dense area of fuel, incase of backfire and thus avoid accident and explosions. When a flammable gas escapes through the safety relief valve to atmosphere it must pass through the flame arrestor which will prevent the occurrence of accidents/backfire. The flame arrestor should be installed prior to the burner to avoid flame propagation into the upstream line due to backfire.



PRODUCT	Flame Arrester with in-built NRV
PRODUCT CODE	R-9102 / 9104
SPECIFICATIONS	Maximum Working Pressure 20 BAR
	End Connection ½", ¾", 1" BSPF as per requirement.
	Medium CNG, LPG, Carbon Dioxide, Nitrogen, Air, Hydrogen, Argon etc.
BRANDS AVAILABLE	VANAZ



PRODUCT	Flame Arrester with in-built NRV
PRODUCT CODE	R-9109 / 9109 I
SPECIFICATIONS	Maximum Working Pressure 20 BAR
	End Connection R 9109, 1½" BSPF
	R 9109 I, 2" BSPF
	Medium LPG, Natural Gas
BRANDS AVAILABLE	VANAZ



PRODUCT	Flame Arrester with in-built NRV
PRODUCT CODE	R-9110 / 9111
SPECIFICATIONS	Maximum Working Pressure 20 BAR
	End Connection R 9110 ½", ¾"-1" BSPF
	R 9111 1 ½", 2" BSPF
	Medium Oxygen, LPG, Natural Gas & Acetylene
BRANDS AVAILABLE	VANAZ

AUTO CHANGE OVER

Auto changeovers are working on a pressure principle and switch the side of supply according to a set pressure drop which activates the switchover. The auto changeover can also be manufactured for liquid LPG systems.



PRODUCT	Auto Changeover
PRODUCT CODE	R-9501
SPECIFICATIONS	R 9501 in 2202 model for 50kgs/hr
	Outlet set pressure 1.2 kg/cm ²
	Inlet pressure 1 to 17 kg/cm ²
	End Connection ½" BSPF
	Suitable for Vapour LPG
BRANDS AVAILABLE	VANAZ

These regulators are used in pressure reducing system for Natural gas or LPG. They are used to reduce the natural gas pressure from 4 to 6 kg/cm² to 75mbar before supplying it to the domestic feeder line. These regulators are having built in over pressure shut off and under pressure shut off valve and creep relief valve (safety relief valve). They can also be installed for LPG / NG Reticulated system in buildings / Apartments and for imported automatic burners.



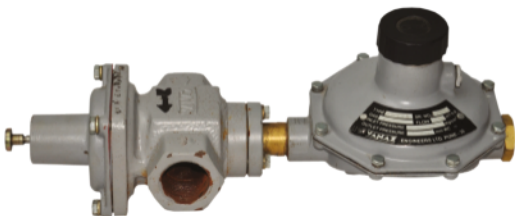
PRODUCT	Service Regulator
PRODUCT CODE	R-4416 / 4416 II / 4418 III UPSO, OPSO & CRV
SPECIFICATIONS	Inlet Pressure Range 0.5 - 6 BAR
	Outlet Pressure Range 100-300 mbar with OPSO UPSO CRV
	Gas Flow Rate 6/10/25/50 Nm ³ /hr.
	End Connection ¾" x 1" BSPF or 1" x 1½" BSPF Gas : Natural Gas, LPG
	OPSO set at 40% higher than set outlet pressure
	UPSO set at 20% below set outlet pressure
	CRV set at 35% higher than set outlet pressure. As per EN88-2
BRANDS AVAILABLE	VANAZ



PRODUCT	Service Regulator
PRODUCT CODE	R-4410 UPSO, OPSO & CRV
SPECIFICATIONS	Inlet Pressure Range 0.5 - 5 Bar
	Outlet Pressure Range 30-200 mbar with OPSO UPSO CRV
	Gas Flow Rate 65 Nm ³ /hr. End Connection 1" BSPF
	Gas Natural Gas, LPG
	OPSO set at 40% higher than set outlet pressure
	UPSO set at 20% below set outlet pressure
	CRV set at 35% higher than set outlet pressure
BRANDS AVAILABLE	VANAZ



PRODUCT	Service Regulator
PRODUCT CODE	R-4411 OPSO, UPSO & CRV
SPECIFICATIONS	Inlet Pressure Range 0.5- 5Bar
	Outlet Pressure Range 0.1-1 Bar
	Gas Flow Rate 100 Nm ³ /hr.
	End Connection 1" BSPF Gas : Natural Gas, LPG
	OPSO set at 40% higher than operating pressure
	UPSO set at 20% lower than operating pressure
	CRV set at 35% higher than set pressure As per EN88-2
BRANDS AVAILABLE	VANAZ

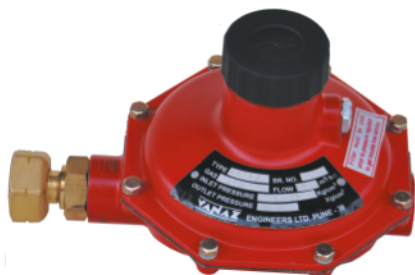


PRODUCT	Service Regulator
PRODUCT CODE	R-4405 OPSO
SPECIFICATIONS	Inlet Pressure Range 0.5- 5 Bar
	Outlet Pressure Range 0.03 -1 Bar with OPSO
	Gas Flow Rate 30 Nm ³ /hr.
	End Connection 1" BSPF
	Gas Natural Gas, LPG
	OPSO set at 40% higher than operating pressure
BRANDS AVAILABLE	VANAZ

These regulators are having preset outlet pressure. However the outlet pressure can be slightly adjusted by rotating the spring adjusting screw. The Industrial Pressure Regulator R-4109 is available with 5 different types of preset outlet pressures. These are suitable for canteen, restaurants & small Industrial Furnaces.

R-4110 is a low pressure medium flow pressure regulator, mainly used for Industrial Furnaces & other gas appliances. R-4202 regulator is mainly suitable for Natural Gas.

These regulators are low pressure low flow rate, pressure regulators. These are mainly used where the inlet pressure is varying in a wider range. These regulators are suitable for small to medium size furnaces. Preset pressure reducing models.



PRODUCT	Preset Pressure Reducer
PRODUCT CODE	R-4109
SPECIFICATIONS	Inlet Pressure Range 1 - 17 Bar
	Outlet Pressure Range (A) 0.03 Bar (B) 0.3 Bar (C) 0.7 Bar (D) 1 Bar (E) 1000 mmwc
	Max Flow Rate : (A) 5 Nm ³ /Hr, (B) 28 Nm ³ /Hr, (C) 28 Nm ³ /Hr, (D) 28 Nm ³ /Hr, (E) 8 Nm ³ /Hr
	End Connection Inlet: 21.8 X 14 TPI (L.H) Female Union Nut, Outlet: ½" BSPF
	Gas : LPG, Nitrogen, Hydrogen, Acetylene, Argon, Natural Gas, Air, Carbon Dioxide
BRANDS AVAILABLE	VANAZ



PRODUCT	Preset Pressure Reducer
PRODUCT CODE	R-4109 V
SPECIFICATIONS	Inlet Pressure Range 1-17 Bar
	Outlet Pressure Range 2 Bar
	Max Flow Rate 30 Nm ³ /hr
	End Connection Inlet: 21.8 X 14 TPI (L.H) Female Union Nut, Outlet: ½" BSPF
	Gas LPG, Natural Gas, Nitrogen, Hydrogen, Carbon Dioxide
BRANDS AVAILABLE	VANAZ



PRODUCT	Preset Pressure Reducer
PRODUCT CODE	R-4110
SPECIFICATIONS	Inlet Pressure Range 1 - 17 Bar
	Outlet Pressure Range 0.03 - 0.3 Bar
	Max Flow Rate 30 Nm ³ /hr.
	End Connection Inlet ½" BSPF / Outlet: ¾" BSPF
	Gas LPG, Natural Gas, Nitrogen, Hydrogen, Carbon Dioxide
BRANDS AVAILABLE	VANAZ



PRODUCT	Preset Pressure Reducer
PRODUCT CODE	R-4110 II
SPECIFICATIONS	Inlet Pressure Range 1 - 17 Bar
	Outlet Pressure Range 0.03 - 0.3 Bar
	Max Flow Rate 30 Nm ³ /hr.
	End Connection Inlet 1" BSPF / Outlet: 1" BSPF
	Gas LPG, Natural Gas, Nitrogen, Hydrogen, Carbon Dioxide
BRANDS AVAILABLE	VANAZ

ADJUSTABLE COMMERCIAL REGULATOR

R-2202 is mainly used as adjustable pressure regulator for LPG / Natural Gas in canteen restaurants & for small furnaces / ovens.



PRODUCT	Adjustable Commercial Regulator
PRODUCT CODE	VANAZ R-2202/2202 I
SPECIFICATIONS	Inlet Pressure : Range 0.5 - 17 Bar Outlet Pressure Range : 0.2 - 2 Bar
	Gas Flow Rate : 25 Nm ³ /hr. End Connection Inlet : 21.8 x 14 TPI L.H. Union nut
	Outlet: ¼" BSPF Gas : LPG, Natural, Carbon Dioxide, Nitrogen, Argon & Air
	Available in Brass R 2202
	Also available in ½" BSPF and union nut on request
BRANDS AVAILABLE	VANAZ

These regulators are having wider outlet pressure range. The outlet pressure can be easily adjusted by rotating the knob of spring adjusting screw. By rotating the knob anticlockwise the outlet pressure is reduced & by rotating it clockwise the outlet pressure is increased. These regulators are mainly used as first stage pressure regulator in the LPG / Natural gas pressure reducing system.



PRODUCT	Adjustable Pressure Regulator
PRODUCT CODE	R-2301
SPECIFICATIONS	Inlet Pressure Range 1 - 17 Bar
	Outlet Pressure Range (a) 0.5 - 2 Bar
	(b) 0.5 - 4 Bar
	(c) 0.5 - 10 Bar
	Gas Flow Rate 100 Nm ³ /hr.
	End Connection 1" BSPF
	Gas LPG, Natural Gas, Nitrogen
	(Aluminium Body Aluminium Bonnet)
	Option of outlet pressure gauge available at extra cost
BRANDS AVAILABLE	VANAZ



PRODUCT	Adjustable Pressure Regulator
PRODUCT CODE	R-2301 II
SPECIFICATIONS	Inlet Pressure Range 15 - 200 Bar
	Outlet Pressure Range 1 - 10 Bar
	Gas Flow Rate 100 Nm ³ /hr.
	End Connection 1" BSPF
	Gas Argon, Hydrogen and Nitrogen
	(Brass Body Aluminium Bonnet)
BRANDS AVAILABLE	VANAZ



PRODUCT	Adjustable Pressure Regulator
PRODUCT CODE	R-2301 III/IV For Carbon Dioxide For Oxygen
SPECIFICATIONS	R-2301 III R-2301 IV
	Inlet Pressure Maximum 15 - 200 Bar 200 Bar
	Outlet Pressure Range 1-10 Bar 0.5 - 10 Bar
	Gas Flow Rate 100 Nm ³ /hr. 100 Nm ³ /hr.
	End Connection 1" BSPF 1" BSPF
	(Brass Body CS Bonnet)
BRANDS AVAILABLE	VANAZ



PRODUCT	Adjustable Pressure Regulator
PRODUCT CODE	R-2323, 2323 II
SPECIFICATIONS	Inlet Pressure Range 1 - 17 Bar
	Outlet Pressure Range (a) 0.5 - 2 Bar
	(b) 0.5 - 4 Bar
	(c) 0.5 - 10 Bar
	Gas Flow Rate 100 Nm ³ /hr.
	End Connection 1" Flanged ANSI #150 R-2323
	1" Flanged ANSI #300 R-2323 II
	Gas LPG, Natural Gas, Nitrogen
	(CS Body Aluminium Bonnet)
BRANDS AVAILABLE	VANAZ



PRODUCT	Adjustable Pressure Regulator
PRODUCT CODE	R-2342 / 2337 / 2337 II
SPECIFICATIONS	Inlet Pressure Maximum 17 Bar
	Outlet Pressure Range 0.5 - 4 Bar
	Gas Flow Rate 150 Nm ³ /hr.
	End Connection R-2342 1" BSPF ,
	R-2337 1" Flanged ANSI #150 for Vapour
	R-2337 II 1" Flanged ANSI #300 for liquid
	Gas LPG
BRANDS AVAILABLE	VANAZ



PRODUCT	Adjustable Pressure Regulator
PRODUCT CODE	R-2343 / 2338/ 2338 II
SPECIFICATIONS	Inlet Pressure Maximum 17 Bar
	Outlet Pressure Range 0.5 - 4 Bar
	Gas Flow Rate 350 Nm ³ /hr.
	End Connection R-2343 1½" BSPF ,
	R-2338 1½" Flanged ANSI # 150 for Vapour
	R-2338 II 1½" Flanged ANSI # 300 for liquid
	Gas LPG
BRANDS AVAILABLE	VANAZ



PRODUCT	Adjustable Pressure Regulator
PRODUCT CODE	R-2344 / 2339/ 2339 II
SPECIFICATIONS	Inlet Pressure Maximum 17 Bar
	Outlet Pressure Range 0.5 - 4 Bar
	Gas Flow Rate 400 Nm ³ /hr.
	End Connection R-2344 2" BSPF ,
	R-2339 2" Flanged ANSI # 150 for Vapour
	R-2339 II 2" Flanged ANSI # 300 for liquid
	Gas LPG
BRANDS AVAILABLE	VANAZ



PRODUCT	Adjustable Pressure Regulator
PRODUCT CODE	R-2340 / 2340 II
SPECIFICATIONS	Inlet Pressure 17 Bar
	Outlet Pressure Range 0.5 - 4 Bar
	Gas Flow Rate 1000 Nm ³ /hr.
	End Connection R-2340 3" Flanged in ANSI # 150 for Vapour
	R-2340 II 3" Flanged in ANSI # 300 for Liquid
	for liquid LPG 2318 Bonnet
	Gas LPG
BRANDS AVAILABLE	VANAZ



PRODUCT	Adjustable Pressure Regulator
PRODUCT CODE	R-2341 / 2341 II
SPECIFICATIONS	Inlet Pressure 19 kg/cm ²
	Outlet Pressure Range 0.5 - 10kg/cm ²
	Gas Flow Rate 1000 Nm ³ /hr.
	End Connection R-2341 4" Flanged in ANSI #150 for Vapour
	R-2341 II 4" Flanged in ANSI # 300 for Liquid
	2318 Bonnet
	Gas LPG
BRANDS AVAILABLE	VANAZ

These Regulators are mainly used for LP gas pressure reducing system. They are also used in steel industries for high pressure oxygen lancing purpose and for pressure reducing systems for high pressure Gas manifolds.



PRODUCT	Adjustable Pressure Regulator
PRODUCT CODE	R-2325
SPECIFICATIONS	Inlet Pressure Range 17 Bar
	Outlet Pressure Range 0.5 - 8 Bar
	Gas Flow Rate 100 Nm ³ /hr.
	End Connection 1" BSPF
	Gas Medical Oxygen, Carbon Dioxide and Oxygen (Brass Body Brass Bonnet)
BRANDS AVAILABLE	VANAZ



PRODUCT	Adjustable Pressure Regulator
PRODUCT CODE	R-2304 / 2304 IV
SPECIFICATIONS	Inlet Pressure Maximum 17 Bar
	Outlet Pressure Range 0.5 - 10 Bar
	Gas Flow Rate 250 Nm ³ /hr.
	End Connection 1½" BSPF for 2304 2" BSPF for 2304 IV
	Gas LPG, Natural Gas and Nitrogen (CS Body Aluminium Bonnet)
BRANDS AVAILABLE	VANAZ



PRODUCT	Adjustable Pressure Regulator
PRODUCT CODE	R-2316 / 2316 II
SPECIFICATIONS	Inlet Pressure Maximum 17 Bar
	Outlet Pressure Range 0.5 - 10 Bar
	Gas Flow Rate 250 Nm ³ /hr.
	End Connection 1½" Flanged end ANSI # 150 for 2316 1½" Flanged end ANSI # 300 for 2316 II
	Gas LPG, Natural Gas and Nitrogen (CS Body Aluminium Bonnet)
BRANDS AVAILABLE	VANAZ



PRODUCT	Adjustable Pressure Regulator
PRODUCT CODE	R-2317 / 2317 II
SPECIFICATIONS	Inlet Pressure Maximum 17 Bar
	Outlet Pressure Range 0.5 - 10 Bar
	Gas Flow Rate 250 Nm ³ /hr.
	End Connection 2" Flanged end ANSI # 150 for 2317 2" Flanged end ANSI # 300 for 2317 II
	Gas LPG, Natural Gas and Nitrogen (CS Body Aluminium Bonnet)
BRANDS AVAILABLE	VANAZ



PRODUCT	Adjustable Pressure Regulator
PRODUCT CODE	R-6412
SPECIFICATIONS	Inlet Pressure Maximum 17 Bar
	Outlet Pressure Range 0.5 - 10 Bar
	Gas Flow Rate 600 Nm ³ /hr.
	End Connection 3" Flanged in ANSI # 150
	2301 Bonnet
	Gas LPG, Natural Gas and Nitrogen
BRANDS AVAILABLE	VANAZ



PRODUCT	Adjustable Pressure Regulator
PRODUCT CODE	R-6414
SPECIFICATIONS	Inlet Pressure Maximum 17 Bar
	Outlet Pressure Range 0.5 - 10 Bar
	Gas Flow Rate 750 Nm ³ /hr.
	End Connection 4" Flanged in ANSI # 150
	2301 Bonnet
	Gas LPG, Natural Gas and Nitrogen
BRANDS AVAILABLE	VANAZ



PRODUCT	Adjustable Pressure Regulator
PRODUCT CODE	R-6424 / 6424 II / 6425 / 6425 II
SPECIFICATIONS	Inlet Pressure Maximum 17 Bar
	Outlet Pressure Range 0.5 - 4 Bar
	Gas Flow Rate 1000 Nm ³ /hr. for 3" / 1500 Nm ³ /hr. for 4"
	End Connection R-6424: 3" Flanged in ANSI # 150
	R-6424 II : 3" Flanged in ANSI # 300
	R-6425: 4" Flanged in ANSI # 150
	R-6425 II : 4" Flanged in ANSI # 300
	2318 Bonnet
	Gas LPG, Natural Gas and Nitrogen
BRANDS AVAILABLE	VANAZ



PRODUCT	Adjustable Pressure Regulator
PRODUCT CODE	R-2328
SPECIFICATIONS	Inlet Pressure Maximum 5 - 49 Bar
	Outlet Pressure Range 5 - 30 Bar
	Gas Flow Rate 1500 Nm ³ /hr.
	End Connection 1/2" BSPF for R 2328
	2310 Bonnet
	Gas Carbon Dioxide, Argon and Nitrogen
BRANDS AVAILABLE	VANAZ

These regulators are having wider outlets pressure range. The outlet pressure can be easily adjusted by rotating the knob of spring adjusting screw. By rotating the knob anticlockwise the outlet pressure is reduced & by rotating it clockwise the outlet pressure is increased. R-2101 are mainly used for gas cutting or welding purpose. These regulators have built in safety relief valve and flow control needle valve at the outlet. Model R-2101 can be supplied with or without pressure gauge. Also available in ½" BSPF and union nut on request



PRODUCT	Industrial Gas Regulator	
PRODUCT CODE	R-2101	
SPECIFICATIONS	Inlet Pressure Range	1-161 Bar
	Outlet Pressure Range	0.5-8 Bar
	Gas Flow Rate	25 Nm ³ /hr.
	SRV set at	12 Bar
	End Connection Inlet	To suit outlet of std. cyl. valve outlet as per IS:3224
	Outlet	Nozzle to suit 8 mm I.D. hose pipe or ¾" BSPM
	Gas	Carbon Dioxide, Oxygen, Hydrogen, Air, Nitrogen, Argon
	Outlet pressure upto 15 bar available on request.	
BRANDS AVAILABLE	VANAZ	



PRODUCT	Industrial Gas Regulator	
PRODUCT CODE	R-2310	
SPECIFICATIONS	Inlet Pressure Maximum	200 Bar
	Outlet Pressure Range	5 - 30 Bar
	Gas Flow Rate	300 Nm ³ /hr.
	End Connection	1½" BSPM
	Gas	Oxygen, Nitrogen, Argon and Carbon dioxide
BRANDS AVAILABLE	VANAZ	



PRODUCT	Industrial Gas Regulator	
PRODUCT CODE	R-2322	
SPECIFICATIONS	Inlet Pressure Maximum	200 Bar
	Outlet Pressure Range	5 - 30 Bar
	Gas Flow Rate	150 Nm ³ /hr.
	End Connection	1" BSPF
	Gas	Oxygen, Nitrogen, Argon and Carbon dioxide
BRANDS AVAILABLE	VANAZ	



PRODUCT	Adjustable Pressure Regulator	
PRODUCT CODE	R-2331 II	
SPECIFICATIONS	Inlet Pressure Maximum	40 Bar
	Outlet Pressure Range	0.5 - 10 Bar
	Gas Flow Rate	500 Nm ³ /hr.
	End Connection	1½" BSPF
	Gas	Medical Oxygen, Nitrogen
		CF8M Body
BRANDS AVAILABLE	VANAZ	



PRODUCT	Industrial Gas Regulator
PRODUCT CODE	R-2328 <i>II</i>
SPECIFICATIONS	Inlet Pressure Maximum 10 - 49 Bar
	Outlet Pressure Range 5 - 25 Bar
	Gas Flow Rate 2000 Nm ³ /hr.
	End Connection 2" ANSI # 300 flanged end
	Gas Oxygen, Nitrogen, Hydrogen, CNG, Argon and Carbon dioxide
BRANDS AVAILABLE	VANAZ

Pilot Operated Regulators

These regulators are more accurate and offer higher capacities than the standard direct operated spring loaded regulators. They maintain a constant outlet pressure even in case of large variation of inlet pressures or flow rates



PRODUCT	Pilot Operated Regulator
PRODUCT CODE	R 6608/ 6608 <i>II</i> / 6617 / 6617 <i>II</i>
SPECIFICATIONS	Inlet Pressure Range 5 - 26 Bar
	Outlet Pressure Range 4 - 19 Bar (4000 - 19000 mbar)
	Gas Flow Rate 6000 Nm ³ /hr.
	End Connection R 6608 3" ANSI # 150 flanged for Vapour
	R 6608 <i>II</i> 3" ANSI # 300 flanged for Liquid
	R 6617 4" ANSI # 150 flanged for Vapour
	R 6617 <i>II</i> 4" ANSI # 300 flanged for Liquid
	Gas LPG, Natural Gas, Nitrogen and Carbon Dioxide
BRANDS AVAILABLE	VANAZ



PRODUCT	Pilot Operated Regulator
PRODUCT CODE	R 6609 / 6609 <i>II</i> / 6614 / 6614 <i>II</i>
SPECIFICATIONS	Inlet Pressure Range 1 - 19 Bar
	Outlet Pressure Range 0.5 - 5 Bar (500 - 5000 mbar)
	Gas Flow Rate 2500 Nm ³ /hr.
	End Connection R 6609 3" ANSI # 150 flanged for Vapour
	R 6609 <i>II</i> 3" ANSI # 300 flanged for Liquid
	R 6614 4" ANSI # 150 flanged for Vapour
	R 6614 <i>II</i> 4" ANSI # 300 flanged for Liquid
	Gas LPG, Natural Gas, Nitrogen and Carbon Dioxide
BRANDS AVAILABLE	VANAZ



PRODUCT	Pilot Operated Regulator
PRODUCT CODE	R 6610 / 6610 <i>II</i> / 6611 / 6611 <i>II</i>
SPECIFICATIONS	Inlet Pressure Range 1 - 19 Bar
	Outlet Pressure Range 0.5 - 5 Bar (500 - 5000 mbar)
	Gas Flow Rate 500 Nm ³ /hr.
	End Connection R 6610 2" ANSI # 150 flanged for Vapour
	R 6610 <i>II</i> 2" ANSI # 300 flanged for Liquid
	R 6611 1½" ANSI # 150 flanged for Vapour
	R 6611 <i>II</i> 1½" ANSI # 300 flanged for Liquid
	Gas LPG, Natural Gas, Nitrogen and Carbon Dioxide
BRANDS AVAILABLE	VANAZ

These regulators are second stage low pressure high flow rate, pressure reducers. These are mainly used where the inlet pressure is varying in a wider range. These regulators are suitable for small to medium size furnaces, for low pressure high flow precision control pressure regulators and are mainly used as second stage pressure regulators. These are also used in medium to bigger size furnaces. These regulators control the outlet pressure very precisely. These are very sensitive regulators and should be used preferably with suitable filters installed before the regulator, and only after first stage regulators.



PRODUCT	Preset Pressure Reducer
PRODUCT CODE	R 5106 / R 5108
SPECIFICATIONS	Inlet Pressure Range 1 - 5 Bar
	Outlet Pressure Range 0.15 - 0.6 Bar (150 - 600 mbar)
	Gas Flow Rate 80 Nm ³ /hr.
	End Connection R 5106 - 1½" BSPF
	R 5108 - 2" BSPF
	Gas LPG, Natural Gas, Nitrogen and Air
BRANDS AVAILABLE	VANAZ



PRODUCT	Preset Pressure Reducer
PRODUCT CODE	R 5107 / R 5109
SPECIFICATIONS	Inlet Pressure Range 1 - 5 Bar
	Outlet Pressure Range 0.15 - 0.3 Bar (150 - 300 mbar)
	Gas Flow Rate 130 Nm ³ /hr.
	End Connection R 5107 - 1½" BSPF
	R 5109 - 2" BSPF
	Gas LPG, Natural Gas, Nitrogen and Air
BRANDS AVAILABLE	VANAZ



PRODUCT	Preset Pressure Reducer
PRODUCT CODE	R 5110 / R 5112
SPECIFICATIONS	Inlet Pressure Range 1 - 5 Bar
	Outlet Pressure Range 0.15 - 0.6 Bar (150 - 600 mbar)
	Gas Flow Rate 80 Nm ³ /hr.
	End Connection R 5110 - 1½" ANSI # 150 Flanged
	R 5112 - 2" ANSI # 150 Flanged
	Gas LPG, Natural Gas, Nitrogen and Air
BRANDS AVAILABLE	VANAZ



PRODUCT	Preset Pressure Reducer
PRODUCT CODE	R-5111 / R-5113
SPECIFICATIONS	Inlet Pressure Range 1 - 5 Bar
	Outlet Pressure Range 0.15 - 0.3 Bar (150 - 300 mbar)
	Gas Flow Rate 130 Nm ³ /hr.
	End Connection R-5111 : 1½" ANSI # 150 Flanged
	R-5113 : 2" ANSI # 150 Flanged
	Gas LPG, Natural Gas, Nitrogen and Air
BRANDS AVAILABLE	VANAZ



PRODUCT	Preset Pressure Reducer	
PRODUCT CODE	R-6418 / R-6419	
SPECIFICATIONS	Inlet Pressure Range	1 - 5 Bar
	Outlet Pressure Range	0.15 - 0.3 Bar (150 - 300 mbar)
	Gas Flow Rate	500 Nm ³ /hr.
	End Connection	R-6418 : 3" ANSI # 150 Flanged R-6419 : 4" ANSI # 150 Flanged
	Gas	LPG, Natural Gas and Nitrogen and Air
BRANDS AVAILABLE	VANAZ	



PRODUCT	Preset Pressure Reducer	
PRODUCT CODE	R-6420 / R-6421	
SPECIFICATIONS	Inlet Pressure Range	1 - 5 Bar
	Outlet Pressure Range	0.15 - 0.6 Bar (150 - 600 mbar)
	Gas Flow Rate	400 Nm ³ /hr.
	End Connection	R-6420 : 3" ANSI # 150 Flanged R-6421 : 4" ANSI # 150 Flanged
	Gas	LPG, Natural Gas and Nitrogen and Air
BRANDS AVAILABLE	VANAZ	



PRODUCT	Preset Pressure Reducer	
PRODUCT CODE	R-6413 / R-6415	
SPECIFICATIONS	Inlet Pressure Range	1 - 5 Bar
	Outlet Pressure Range	0.15 - 0.6 Bar (150 - 600 mbar)
	Gas Flow Rate	650 Nm ³ /hr.
	End Connection	R-6413 : 3" ANSI # 150 Flanged R-6415 : 4" ANSI # 150 Flanged
	Gas	LPG, Natural Gas and Nitrogen and Air
BRANDS AVAILABLE	VANAZ	



PRODUCT	Preset Pressure Reducer	
PRODUCT CODE	R-6422 / R-6423	
SPECIFICATIONS	Inlet Pressure Range	1 - 5 Bar
	Outlet Pressure Range	0.1 - 0.3 Bar (100 - 300 mbar)
	Gas Flow Rate	750 Nm ³ /hr.
	End Connection	R-6422 : 3" ANSI # 150 Flanged R-6423 : 4" ANSI # 150 Flanged
	Gas	LPG, Natural Gas and Nitrogen and Air
BRANDS AVAILABLE	VANAZ	



PRODUCT	Preset Pressure Reducer	
PRODUCT CODE	R-6430 / R-6431	
SPECIFICATIONS	Inlet Pressure Range	1 - 5 Bar
	Outlet Pressure Range	0.05 - 0.15 Bar (50 - 150 mbar)
	Gas Flow Rate	1000 Nm ³ /hr.
	End Connection	R-6430 : 3" ANSI # 150 Flanged R-6431 : 4" ANSI # 150 Flanged
	Gas	LPG, Natural Gas and Nitrogen and Air
BRANDS AVAILABLE	VANAZ	



PRODUCT	Preset Pressure Reducer	
PRODUCT CODE	R-6506	
SPECIFICATIONS	Inlet Pressure Range	0.5 - 5 Bar
	Outlet Pressure Range	0.03 - 0.15 Bar (30 - 150 mbar)
	Gas Flow Rate	2500 Nm ³ /hr.
	End Connection	6" ANSI # 150 Flanged
	Gas	LPG, Natural Gas and Nitrogen and Air
BRANDS AVAILABLE	VANAZ	



PRODUCT	Preset Pressure Reducer	
PRODUCT CODE	R-6118 / R-6119	
SPECIFICATIONS	Inlet Pressure Range	1.5 Bar
	Outlet Pressure Range	0.01 - 0.2 Bar (10 - 200 mbar)
	Gas Flow Rate	120 Nm ³ /hr.
	End Connection	R-6118 : 1½" ANSI # 150 Flanged R-6119 : 2" ANSI # 150 Flanged
	Gas	LPG, Natural Gas and Nitrogen and Air
BRANDS AVAILABLE	VANAZ	



PRODUCT	Preset Pressure Reducer	
PRODUCT CODE	R-6111 I / R-6121	
SPECIFICATIONS	Inlet Pressure Range	1.5 Bar
	Outlet Pressure Range	0.03 - 0.6 Bar (30 - 600 mbar)
	Gas Flow Rate	80 Nm ³ /hr.
	End Connection	R-6111 I : 1½" BSPF R-6121 : 2" BSPF
	Gas	LPG, Natural Gas and Nitrogen and Air
BRANDS AVAILABLE	VANAZ	



PRODUCT	Preset Pressure Reducer	
PRODUCT CODE	R-6116 / R-6117	
SPECIFICATIONS	Inlet Pressure Range	1.5 Bar
	Outlet Pressure Range	0.03 - 0.6 Bar (30 - 600 mbar)
	Gas Flow Rate	80 Nm ³ /hr.
	End Connection	R-6116 : 1½" ANSI # 150 Flanged R-6117 : 2" ANSI # 150 Flanged
	Gas	LPG, Natural Gas and Nitrogen and Air
BRANDS AVAILABLE	VANAZ	



PRODUCT	Preset Pressure Reducer	
PRODUCT CODE	R-6106 / R-6120	
SPECIFICATIONS	Inlet Pressure Range	1.5 Bar
	Outlet Pressure Range	0.01 - 0.2 Bar (10 - 200 mbar)
	Gas Flow Rate	120 Nm ³ /hr.
	End Connection	R-6106 : 1½" BSPF R-6120 : 2" BSPF
	Gas	LPG, Natural Gas and Nitrogen and Air
BRANDS AVAILABLE	VANAZ	



PRODUCT	Preset Pressure Reducer	
PRODUCT CODE	R-6416 / R-6417	
SPECIFICATIONS	Inlet Pressure Range	1.5 Bar
	Outlet Pressure Range	0.03 - 0.5 Bar (30 - 500 mbar)
	Gas Flow Rate	500 Nm ³ /hr.
	End Connection	R-6416 : 3" ANSI # 150 Flanged R-6417 : 4" ANSI # 150 Flanged
	Gas	LPG, Natural Gas and Nitrogen and Air
BRANDS AVAILABLE	VANAZ	



PRODUCT	Preset Pressure Reducer	
PRODUCT CODE	R-6410 / R-6411	
SPECIFICATIONS	Inlet Pressure Range	1.5 Bar
	Outlet Pressure Range	0.03 - 0.3 Bar (30 - 300 mbar)
	Gas Flow Rate	600 Nm ³ /hr.
	End Connection	R-6410 : 3" ANSI # 150 Flanged R-6411 : 4" ANSI # 150 Flanged
	Gas	LPG, Natural Gas and Nitrogen and Air
BRANDS AVAILABLE	VANAZ	

A filter must be fitted prior to the regulator on the upstream or downstream side to ensure that only clean, dust free gas enters the regulator. The presence of dust / dirt in pipeline results in malfunctioning of the regulator because of damage which may be caused to the regulator seat and rubber seating pad. Also movement of the linkage is restricted due to the deposit of dust / dirt on the moving parts and it affects the performance of the regulator.



PRODUCT	Filter Aluminium Die Cast Body
PRODUCT CODE	F 0112 III
SPECIFICATIONS	Working Pressure 6 Bar
	Gas Flow Capacity 100 Nm ³ /hr.
	End Connection 1" BSPF
	Gas LPG, Natural Gas, Nitrogen and Air
BRANDS AVAILABLE	VANAZ



PRODUCT	Filter WCB CS Body
PRODUCT CODE	F 0105 / 0105 I / 0105 II
SPECIFICATIONS	Working Pressure 20 Bar
	Gas Flow Capacity 200 / 350 / 500 Nm ³ /hr.
	End Connection F 0105 1" BSPF
	F 0105 I 1½" BSPF
	F 0105 II 2" BSPF
	Gas LPG, Natural Gas, Nitrogen and Air
BRANDS AVAILABLE	VANAZ



PRODUCT	Filter WCB CS Body / Fabricated
PRODUCT CODE	F 0109 / 0109 II
SPECIFICATIONS	Working Pressure 20 Bar
	Gas Flow Capacity 200 Nm ³ /hr.
	End Connection F 0109 1" ANSI 150 for Vapour
	F 0109 II 1" ANSI # 300 for Liquid
	Gas LPG, Natural Gas, Nitrogen and Air
BRANDS AVAILABLE	VANAZ



PRODUCT	Filter WCB CS body / Fabricated
PRODUCT CODE	F 0107 / 0107 II / 0108 / 0108 II
SPECIFICATIONS	Working Pressure 20 Bar
	Gas Flow Capacity 350 / 350 / 500 / 500 Nm ³ /hr.
	End Connection F 0107 1½" ANSI # 150 for Vapour
	F 0107 II 1½" ANSI # 300 for liquid
	F 0108 2" ANSI # 150 for Vapour
	F 0108 II 2" ANSI # 300 for liquid
	Gas LPG, Natural Gas, Nitrogen and Air
BRANDS AVAILABLE	VANAZ



PRODUCT	Filter WCB CS body / Fabricated
PRODUCT CODE	F 0111 / 0111 III / 0106 / 0106 III
SPECIFICATIONS	Working Pressure 20 Bar
	Gas Flow Capacity 3000 / 3000 / 5000 / 5000 Nm ³ /hr.
	End Connection F 0111 3" ANSI # 150 for Vapour
	F 0111 III 3" ANSI # 300 for liquid
	F 0106 4" ANSI # 150 for Vapour
	F 0106 III 4" ANSI # 300 for liquid
	Gas LPG, Natural Gas, Nitrogen and Air
BRANDS AVAILABLE	VANAZ

Slam Shut-off valve is installed immediately after the filter & prior to the Regulator. It normally remains open. In case the outlet pressure of the regulator exceeds the permissible limits, the slam shut off valve senses it through the impulse line & immediately shuts off the flow to downstream. When the regulator is repaired, the slam shut off valve is to be opened manually by pulling the knob. Once the flow starts through the slam shut off valve it will remain open till the outlet pressure of the regulator is within limits.



PRODUCT	Slam Shut Off Valve
PRODUCT CODE	V-4321 <i>I</i>
SPECIFICATIONS	Inlet Pressure Range 0.5 - 19 Bar
	Shut Off Pressure Setting (a) 0.5 Bar (b) 3 Bar (c) 6 Bar
	Gas Flow Rate 150 Nm ³ /hr
	End Connection 1" BSPF
	Gas LPG, Natural Gas, Oxygen, Nitrogen, Carbon dioxide, Air
	Supplied with sensing hose
BRANDS AVAILABLE	VANAZ



PRODUCT	Slam Shut Off Valve
PRODUCT CODE	V-4325 <i>I</i> / 4325 <i>II</i>
SPECIFICATIONS	Inlet Pressure Range 0.5 - 19 Bar
	Shut Off Pressure Setting (a) 0.5 Bar (b) 3 Bar (c) 6 Bar
	Gas Flow Rate 150 Nm ³ /hr
	End Connection V-4325 <i>I</i> 1" ANSI # 150 for vapour V-4325 <i>II</i> 1" ANSI # 300 for liquid
	Gas LPG, Natural Gas, Oxygen, Nitrogen, Carbon dioxide, Air
	Supplied with sensing hose
BRANDS AVAILABLE	VANAZ



PRODUCT	Slam Shut Off Valve
PRODUCT CODE	V-4326 <i>I</i>
SPECIFICATIONS	Inlet Pressure Range 30 - 250 Bar
	Shut Off Pressure Setting 12 - 120 Bar
	Gas Flow Rate 1000 Nm ³ /hr
	End Connection 1" BSPF or 1½" BSPM
	Gas LPG, Natural Gas, Oxygen, Nitrogen, Carbon dioxide, Air
	Supplied with sensing hose
BRANDS AVAILABLE	VANAZ



PRODUCT	Slam Shut Off Valve
PRODUCT CODE	V-4327 <i>I</i> / 4327 <i>II</i> / 4328 <i>I</i> / 4328 <i>II</i>
SPECIFICATIONS	Inlet Pressure Range 0.5 - 19 Bar
	Shut Off Pressure Setting (a) 0.5 Bar (b) 3 Bar (c) 6 Bar
	Gas Flow Rate : 400 Nm ³ /hr
	End Connection V-4327 <i>I</i> 1½" ANSI # 150 for vapour V-4327 <i>II</i> 1½" ANSI # 300 for liquid V-4328 <i>I</i> 2" ANSI # 150 for vapour V-4328 <i>II</i> 2" ANSI # 300 for liquid
	Gas LPG, Natural Gas, Oxygen, Nitrogen Carbon Dioxide, Air
	Supplied with sensing hose
BRANDS AVAILABLE	VANAZ



PRODUCT	Slam Shut Off Valve
PRODUCT CODE	V 4329 <i>I</i> / 4330 <i>I</i>
SPECIFICATIONS	Inlet Pressure Range 0.5 - 19 Bar
	Shut Off Pressure Setting (a) 0.5 Bar (b) 3 Bar (c) 6 Bar
SPECIFICATIONS	Gas Flow Rate 750 Nm ³ /hr
	End Connection V 4329 <i>I</i> 3" ANSI # 150 V 4330 <i>I</i> 4" ANSI # 150
SPECIFICATIONS	Gas LPG, Natural Gas, Oxygen, Nitrogen, Carbon dioxide, Air
	Supplied with sensing hose
BRANDS AVAILABLE	VANAZ



PRODUCT	Slam Shut Off Valve
PRODUCT CODE	V 4335 <i>I</i> / 4335 <i>II</i> / 4336 <i>I</i> / 4336 <i>II</i>
SPECIFICATIONS	Inlet Pressure Range 0.5 - 26 Bar
	Shut Off Pressure Setting 1 - 12 Bar
SPECIFICATIONS	End Connection V 4335 <i>I</i> 3" ANSI # 150 for vapour V 4335 <i>II</i> 3" ANSI # 300 for liquid V 4336 <i>I</i> 4" ANSI # 150 for vapour V 4336 <i>II</i> 4" ANSI # 300 for liquid
	Gas LPG, Natural Gas, Oxygen, Nitrogen, Carbon dioxide, Air
	Supplied with sensing hose
	BRANDS AVAILABLE



PRODUCT	Slam Shut Off Valve
PRODUCT CODE	V 4335 with 2301 Pilot
SPECIFICATIONS	Working Pressure 1 - 49 Bar
	Shut Off Pressure Setting 6 - 12 Bar
SPECIFICATIONS	Gas Flow Rate 6000 Nm ³ /hr
	End Connection 3" or 4" flanged end ANSI # 150
SPECIFICATIONS	Medium LPG, Natural Gas, Oxygen, Nitrogen, Carbon dioxide Hydrogen, Air
	Supplied with sensing hose
BRANDS AVAILABLE	VANAZ



PRODUCT	Slam Shut Off Valve
PRODUCT CODE	V-4323
SPECIFICATIONS	Inlet Pressure Range 10 - 250 Bar
	Shut Off Pressure Setting 12 - 120 Bar
SPECIFICATIONS	Gas Flow Rate 500 Nm ³ /hr
	End Connection 1" BSPF
SPECIFICATIONS	Gas Natural Gas, Oxygen, Nitrogen, Carbon dioxide and Hydrogen
	Supplied with sensing hose
BRANDS AVAILABLE	VANAZ

These regulators are mainly used for ammonia gas. The trim parts for these regulators are of stainless steel. R-4108 / R 4110 I are preset type regulators and are mainly used as second stage pressure regulation. R-2301 I is adjustable pressure regulator and is mainly used as first stage pressure regulator. R-2402 is a fine control adjustable pressure regulator which is used when precision pressure control is required for instrumentation purpose like Air-Gauges.



PRODUCT	Ammonia Pressure Regulator
PRODUCT CODE	R-2301 I
SPECIFICATIONS	Inlet Pressure Range 1 - 20 Bar
	Outlet Pressure 0.5 - 10 Bar
	Gas Flow Rate 100 Nm ³ /hr.
	End Connection 1" BSPF
	Gas Ammonia
BRANDS AVAILABLE	VANAZ



PRODUCT	Ammonia Pressure Regulator
PRODUCT CODE	R-4110 I
SPECIFICATIONS	Inlet Pressure Range 1 - 20 Bar
	Outlet Pressure Range 0.5 - 10 Bar
	Max Flow Rate 30 Nm ³ /hr.
	End Connection Inlet ½" BSPF
	Outlet ¾" BSPF
	Also available in 1" BSPF
	Gas Ammonia
BRANDS AVAILABLE	VANAZ



PRODUCT	Ammonia Pressure Regulator
PRODUCT CODE	R-2402
SPECIFICATIONS	Max Inlet Pressure 22 Bar
	Outlet Pressure 0.5 - 0.4 Bar
	Gas Flow Rate 25 Nm ³ /hr.
	End Connection ½" BSPF (Union Nut)
	Gas Ammonia
BRANDS AVAILABLE	VANAZ



PRODUCT	Ammonia Pressure Regulator
PRODUCT CODE	R-4108
SPECIFICATIONS	Inlet Pressure Range 1-5 Bar
	Outlet Pressure (a) 30 - 150 mbar, (b) 150 - 300 mbar, (c) 300 - 700 mbar, (d) 700 - 1000 mbar
	Inlet Connection ½" BSPF (Union Nut)
	Outlet Connection ½" BSPF
	Gas Ammonia
	Gas Flow Rate (a) 10 Nm ³ /hr. (b) 30 Nm ³ /hr. (c) 30 Nm ³ /hr. (d) 30 Nm ³ /hr.
BRANDS AVAILABLE	VANAZ

These Valves conform to the Indian Standard Specifications IS:3224 (equivalent to BS:341, Part I) for Cylinder valves, in every respect. All raw materials are fully tested for their chemical composition before being put to use. Simple construction & interchangeability of components make maintenance and repairs easy & fast. All valve bodies are of forged construction, duly heat treated stress relieved. The valve bodies have high strength, superior wear resistance and High impact values. We perform rigorous quality checks. Forged valve blanks are tested from every lot for actual physical values before machining. Each valve is tested at it's full working pressure before despatch. All valves are soft to work because of good surface finish.

Oxygen - Wheel Type Oxygen



Hydrogen Nitrogen Vertical O₂ valve



PRODUCT	High Pressure Cylinder Valve for Industrial Gas	
PRODUCT CODE	V-6601 - 6613 - 0107 / 6603 / 4003	
SPECIFICATIONS	Name of Gas	Oxygen / Acetylene / Hydrogen / Argon / Nitrogen
	Test Pressure	161 Bar
	Working Pressure	Oxygen / Hydrogen 161 Kg/cm ³ / Acetylene 30 kg/cm ²
	Outlet Thread Oxygen	Internal 5/8" BSP Outlet No.3 as per IS:3224:1979
	Acetylene & Hydrogen	Internal 5/8" BSP L.H. Outlet No.2 as per IS:3224:1979
BRANDS AVAILABLE	VANAZ	

CO₂ CO₂-Wheel Type



PRODUCT	High Pressure Cylinder Valve for Industrial Gas	
PRODUCT CODE	V-1117	
SPECIFICATIONS	Name of Gas	Carbon Dioxide
	Test Pressure	155 Bar
	Working Pressure	105 Bar
	Outlet Thread	External 21.8 mm x 1.81 4 pitch Whitworth
	Profile Outlet	No.7 as per IS:3224:1979
BRANDS AVAILABLE	VANAZ	

Ammonia



PRODUCT	High Pressure Cylinder Valve for Industrial Gas	
PRODUCT CODE	TEKNO NH3	
SPECIFICATIONS	Name of Gas	Ammonia
	Test Pressure	65 Bar
	Working Pressure	45 Bar
	Outlet Thread	As per IS:3224:1979
	End Connection	1/2" BSPF
BRANDS AVAILABLE	TEKNO	

Industrial Gas Cylinder Valves are also available in Tekno make with 250 kg / cm² rating As per IS:3224:1979



FISHING BOAT, GENERATOR, AUTORICKSHAW, CNG / LPG PRODUCTS

LPG/CNG KIT SPARE PARTS FOR BAJAJ, TVS, APE 3 WHEELERS

For information please contact:

+91 7030713366 or email : domestic@mahamulti.com



PRODUCT	Filter Aluminium Die Cast Body	
PRODUCT CODE	VEL- 0112 A / 0112 B / 0112 C	
SPECIFICATIONS	Working Pressure	6 Bar
	Gas Flow Capacity	100 Nm ³ /hr.
	End Connection	VEL-0112 A : ½" BSPF VEL-0112 B : ¾" BSPF VEL-0112 C : 1" BSPF
	Gas	LPG, Natural Gas and Nitrogen and Air
BRANDS AVAILABLE	VEL	



PRODUCT	Filter WCB CS Body	
PRODUCT CODE	VEL- 0105 / 0105 I	
SPECIFICATIONS	Working Pressure	20 Bar
	Gas Flow Capacity	200 / 350 / 500 Nm ³ /hr.
	End Connection	VEL-0105 : 1" BSPF VEL-0105 I : 1½" BSPF
	Gas	LPG, Natural Gas and Nitrogen and Air
BRANDS AVAILABLE	VEL	



PRODUCT	Filter MS Fabricated Body	
PRODUCT CODE	VEL- 0109 / 0109 II	
SPECIFICATIONS	Working Pressure	20 Bar
	Gas Flow Capacity	200 Nm ³ /hr.
	End Connection	VEL-0109 : 1" ANSI 150 for Vapour VEL-0109 II : 1" ANSI 300 for Liquid
	Gas	LPG, Natural Gas and Nitrogen and Air
BRANDS AVAILABLE	VEL	



PRODUCT	Filter MS Fabricated Body	
PRODUCT CODE	VEL- 0107 / 0107 II / 0108 / 0108 II	
SPECIFICATIONS	Working Pressure	20 Bar
	Gas Flow Capacity	350 / 350 / 500 / 500 Nm ³ /hr.
	End Connection	VEL-0107 : 1½" ANSI #150 for Vapour VEL-0107 II : 1½" ANSI #300 for Liquid VEL-0108 : 2" ANSI #150 for Vapour VEL-0108 II : 2" ANSI #300 for Liquid
	Gas	LPG, Natural Gas and Nitrogen and Air
BRANDS AVAILABLE	VEL	

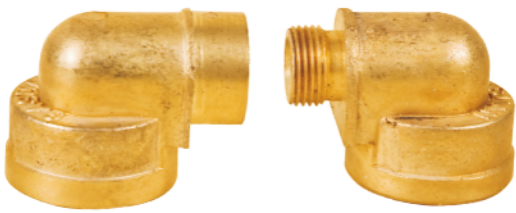


PRODUCT	Filter WCB CS Body / Fabricated	
PRODUCT CODE	VEL- 0111 / 0111 III / 0106 / 0106 III	
SPECIFICATIONS	Working Pressure	20 Bar
	Gas Flow Capacity	3000 / 3000 / 5000 / 5000 Nm ³ /hr.
	End Connection	VEL-0111 : 3" ANSI #150 for Vapour VEL-0111 III : 3" ANSI #300 for Liquid VEL-0106 : 4" ANSI #150 for Vapour VEL-0106 III : 4" ANSI #300 for Liquid
	Gas	LPG, Natural Gas and Nitrogen and Air
BRANDS AVAILABLE	VEL	

02

METERS

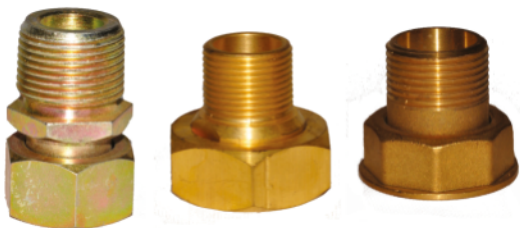




PRODUCT	Meter Adapter for Domestic Gas Meters
PRODUCT CODE	1446
SPECIFICATIONS	Brass forged elbow type meter adapters for inlet and outlet having 3/8" BSPF inlet and 3/8" BSPM or 3/8" BSPF outlet
BRANDS AVAILABLE	UE



PRODUCT	Meter Adapter for Commercial / Domestic Gas Meters
PRODUCT CODE	1444
SPECIFICATIONS	Brass forged meter adapters for inlet and outlet having 3/8" BSPF inlet and 3/8" BSPM or 3/8" BSPF or as per customer requirements. Also available in MS plated body.
BRANDS AVAILABLE	UE



PRODUCT	Meter Adapter for Commercial Gas Meters
PRODUCT CODE	1442 / 1443
SPECIFICATIONS	Nut nipple type male female meter adapters in various sizes to suit in MS or Brass Body commerical diaphragm type gas meters of different models
BRANDS AVAILABLE	UE



PRODUCT	Meter Adapter for Commercial Gas Meters
PRODUCT CODE	1441
SPECIFICATIONS	Nut nipple type male female meter adapters in various sizes to suit in plated MS body commerical diaphragm type gas meters of different models
BRANDS AVAILABLE	UE



PRODUCT	Meter Stand for Gas Meters as per model in MS or SS Body
PRODUCT CODE	1439 / 1440
SPECIFICATIONS	MS fabricated or SS sheet metal meter clamps for gas meters
BRANDS AVAILABLE	UE



PRODUCT	Meter Regulator with UPSO Auto Reset
PRODUCT CODE	1470 S / 1470 P
SPECIFICATIONS	Aluminium die cast gas regulator with auto reset having 3/4" BSPF inlet and 3/4" BSPF outlet for domestic gas meters
	Inlet pressure 110 mbar
	Outlet pressure 28 mbar
BRANDS AVAILABLE	SANBRO / PEPL



PRODUCT	Meter Regulator with UPSO Manual Reset
PRODUCT CODE	1470 M
SPECIFICATIONS	Aluminium die cast gas regulator with manual reset having 1/2" FECV inlet and 1/2" BSPM outlet for domestic gas meters
	Inlet pressure 7 bar
	Outlet pressure 28 mbar
BRANDS AVAILABLE	MONDIAL LP 150



PRODUCT	EN 331 BALL VALVE
PRODUCT CODE	1278 EN
SPECIFICATIONS	QT ball valves in 1/2" BSPF size
	QT ball valves use for gas meter applications made as per EN 331 standard in forged brass chrome plated body
	Approved by major CGD
	Can be manufacture in different models
BRANDS AVAILABLE	ASTRON



PRODUCT	Quarter Turn Ball Valves
PRODUCT CODE	1278 / 1279
SPECIFICATIONS	QT ball valves with various sizes in 1/2", 3/8" or 1/4" BSPF models inlet outlet
	QT ball valves with various sizes in 1/2", 3/8" or 1/4" BSPF models inlet and 8 mm nozzle outlet for gas meter applications made in forged brass chrome plated body as per EN 331
BRANDS AVAILABLE	SG



PRODUCT	Anaconda Hose for Gas Meters
PRODUCT CODE	1236 / 1237
SPECIFICATIONS	Low pressure GI or SS braided hoses for gas meters in various lengths and end fittings. Please specify length, pressure and end fitting.
BRANDS AVAILABLE	SE



PRODUCT	Commercial Diaphragm Gas Meter
PRODUCT CODE	1492 to 1496
SPECIFICATIONS	Model G4, G6, G10, G16, G 25
	Maximum Pressure rating 0.3 or 0.5 Bar. Flow 6,10,16, 25, and 40 Nm ³ /hr
	Use only for dry gas, no moisture or liquid should enter the meter.
BRANDS AVAILABLE	ELSTER / QW KROM 0.3 bar and SICONIA 0.5 bar



PRODUCT	Domestic Diaphragm Gas Meter
PRODUCT CODE	1490
SPECIFICATIONS	Maximum Pressure rating 300 mbar 2.5 m ³ for LPG & Natural Gas with MID/type approval and EN1359 certificate.
	Use only for dry gas, no moisture or liquid should enter the meter.
BRANDS AVAILABLE	RAYCHEM RPG / CAPITAL



PRODUCT	Commercial Diaphragm Gas Meter 2 Bar
PRODUCT CODE	1497 MI
SPECIFICATIONS	Model MG4
	Maximum Pressure rating 2 Bar. Flow 6 Nm ³ /hr for LPG & Natural Gas with MID/type approval and EN1359 certificate.
	Use only for dry gas, no moisture or liquid should enter the meter.
BRANDS AVAILABLE	SAGEMCOM SICONIA



PRODUCT	Commercial Cum Domestic Gas Meter (Jet Stream Technology)
PRODUCT CODE	1491
SPECIFICATIONS	Model 1.8, 3.2, 4
	Maximum Pressure rating 5 Bar.
	Available in two models with Bluetooth and Digital Display
	Connection ½" BSPM x ½" BSPF
	Flow upto 30 Kg/hr
	Use only for dry gas, no moisture or liquid should enter the meter.
BRANDS AVAILABLE	SMARTBOY by ELEHANT



PRODUCT	Rotary Gas Meter RABO series
PRODUCT CODE	1471A P to 1488A P
SPECIFICATIONS	Anodized extruded aluminum body gas meter for Industrial and commercial use.
	Flow capacity from 25 m ³ to 650 m ³
	Maximum pressure 16 bar
	Use only for dry gas, no moisture or liquid should enter the meter
	Available in DN 40, DN 50, DN 80, DN 100 Sizes.
BRANDS AVAILABLE	PIETRO - FIORENTINI



PRODUCT	Rotary Piston Displacement Type Meter for Dry Gas
PRODUCT CODE	1471 A to 1488 A
SPECIFICATIONS	Aluminium die cast gas meter for industrial and commercial use.
	Available in DN 40, DN 50, DN 80, DN 100 sizes.
	Flow capacity from 25 m ³ to 650 m ³
	Maximum pressure 16 bar
	Use only for dry gas, no moisture or liquid should enter the meter.
BRANDS AVAILABLE	FMG / RRM



PRODUCT	Radial Blade Turbine Type Meter for Dry Gas
PRODUCT CODE	1471 to 1488
SPECIFICATIONS	Cast steel gas meter for industrial and commercial use.
	Available in DN 40, DN 50, DN 80, DN 100 sizes.
	Flow capacity from 25 m ³ to 650 m ³
	Maximum pressure 6 bar
	Also available in Axial turbine type.
	Use only for dry gas, no moisture or liquid should enter the meter.
BRANDS AVAILABLE	ELGAS



PRODUCT	Turbine Gas Meter Quantometer series
PRODUCT CODE	1471E to 1488E
SPECIFICATIONS	Aluminum body gas meter for Industrial and commercial use.
	Available in DN 25, DN 40, DN 50, DN 80, DN 100 sizes
	Flow capacity from 25 m ³ to 650 m ³
	Maximum pressure for DN 25, DN 40, DN 50 : 4 Bar and for DN 80 & DN 100 : 16 Bar
	Use only for dry gas, no moisture or liquid should enter the meter
BRANDS AVAILABLE	ELSTER - HONEYWELL



PRODUCT	ELECTRONIC VOLUME CORRECTOR
PRODUCT CODE	EVC - ELCOR
SPECIFICATIONS	Electronic volume corrector for gas volume conversion with temperature and pressure interface.
	Available in two models : Elcor and Elcorplus
BRANDS AVAILABLE	ELCOR by ELGAS



PRODUCT	ELECTRONIC VOLUME CORRECTOR
PRODUCT CODE	EVC - PLUM
SPECIFICATIONS	Electronic volume corrector for gas volume conversion with temperature and pressure interface.
	Model MAC BAT V
BRANDS AVAILABLE	PLUM

03

MANIFOLDS & FITTINGS

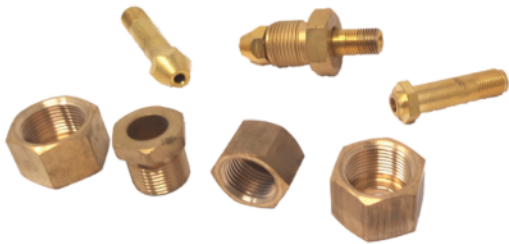




PRODUCT	Industrial Gas Manifolds
PRODUCT CODE	1161 to 1167 A
SPECIFICATIONS	For Industrial Gases like Oxygen, Hydrogen, Nitrogen, Argon, Carbon dioxide, Helium, Ammonia etc. Suitable for any number of cylinders to be used at a time. Center distance between the consecutive lugs is 300 mm (12"), 2 x 2, 3 x 3, 4 x 4, 5 x 5, 6 x 6, 7 x 7, 8 x 8 etc.
	We manufacture manifolds for all Industrial Gases in stainless steel schedule 80 pipe and forged blocks.
	As depicted here to withstand pressure upto 400 bar
BRANDS AVAILABLE	PUNEGAS



PRODUCT	Industrial Gas Manifolds
PRODUCT CODE	1161 to 1167 A
SPECIFICATIONS	For Industrial Gases like Oxygen, Hydrogen, Nitrogen, Argon, Carbon dioxide, Helium, Ammonia etc. Suitable for any number of cylinders to be used at a time. Center distance between the consecutive lugs is 300 mm (12"), 2 x 2, 3 x 3, 4 x 4, 5 x 5, 6 x 6, 7 x 7, 8 x 8 etc.
	We manufacture manifolds for all Industrial Gases in stainless steel schedule 80 pipe and forged blocks.
	As depicted here to withstand pressure upto 400 bar
BRANDS AVAILABLE	PUNEGAS



PRODUCT	Manifold Fittings - Nuts & Nipples
PRODUCT CODE	1204
SPECIFICATIONS	Brass forged nut and nipple
	Working Pressure 300 bar
	For all Industrial Gases
BRANDS AVAILABLE	EMBROS



PRODUCT	Industrial Gas Hose
PRODUCT CODE	1245
SPECIFICATIONS	400 bar / 6000 psi pressure rating thermo plastic hose for Industrial Gases in various fittings and lengths.
BRANDS AVAILABLE	JACK HOSE /SE



PRODUCT	High Pressure NRV
PRODUCT CODE	1419
SPECIFICATIONS	Non return valve for Industrial Gases with 6000 psi capacity, 1/4" M x F suited to mount on manifolds
	SS body
BRANDS AVAILABLE	UE



120-D-LPG

PRODUCT : Cylinder Regulator

DOUBLE STAGE DOUBLE GAUGES OXYGEN REG IP : 200 BAR OP : 10 BAR FLOW 60 NM³/HR
 SINGLE STAGE DOUBLE GAUGES OXYGEN REG. IP: 200 BAR OP: 8 BAR FLOW 55 NM³/HR
 DOUBLE STAGE DOUBLE GAUGES DURABLE SERIES SS DIAPHRAGM OR REG
 IP: 230 BAR OP: 12 BAR FLOW 70 NM³/HR
 SINGLE STAGE DOUBLE GAUGES HIGH FLOW OXYGEN REG IP: 200 BAR OP: 14 BAR FLOW 85 NM³/HR

DOUBLE STAGE DOUBLE GAUGES NITROGEN REG IP: 200 BAR OP: 10 BAR FLOW 55 NM³/HR
 DOUBLE STAGE DOUBLE GAUGES DURABLE SERIES SS DIAPHRAGM N2 REG
 IP: 230 BAR OP: 12 BAR FLOW 60 NM³/HR
 SINGLE STAGE DOUBLE GAUGES NITROGEN REG IP: 200 BAR OP: 8 BAR FLOW 50 NM³/HR

DOUBLE STAGE DOUBLE GAUGES HYDROGEN REG IP: 200 BAR OP: 8 BAR FLOW 55 NM³/HR
 DOUBLE STAGE DOUBLE GAUGES DURABLE SERIES SS DIAPHRAGM H2 REG
 IP: 230 BAR OP: 12 BAR FLOW 70 NM³/HR
 SINGLE STAGE DOUBLE GAUGES HYDROGEN REG IP: 200 BAR OP: 8 BAR FLOW 50 NM³/HR

DOUBLE STAGE DOUBLE GAUGES HELIUM REG IP: 200 BAR OP: 8 BAR FLOW 55 NM³/HR
 DOUBLE STAGE DOUBLE GAUGES DURABLE SERIES SS DIAPHRAGM HELIUM REG
 IP: 230 BAR OP: 12 BAR FLOW 60 NM³/HR
 SINGLE STAGE DOUBLE GAUGES HELIUM REG IP: 200 BAR OP: 8 BAR FLOW 50 NM³/HR



HOX - 230

DOUBLE STAGE DOUBLE GAUGES CARBON DIOXIDE REG IP: 200 BAR OP: 10 BAR FLOW 8 NM³/HR
 DOUBLE STAGE DOUBLE GAUGES DURABLE SERIES SS DIAPHRAGM CO2 REG
 IP: 200 BAR OP: 10 BAR FLOW 10 NM³/HR

DOUBLE STAGE DOUBLE GAUGES ARGON REG IP: 200 BAR OP: 10 BAR FLOW 40 NM³/HR
 DOUBLE STAGE DOUBLE GAUGES DURABLE SERIES SS DIAPHRAGM ARGON REG
 IP: 200 BAR OP: 10 BAR FLOW 60 NM³/HR

DOUBLE STAGE DOUBLE GAUGES ACETYLENE REG IP: 25 BAR OP: 1 BAR FLOW 15 NM³/HR
 SINGLE STAGE LPG REG IP : 17 BAR OP : 14 BAR CYLINDER MOUNTED



DU - CO₂

SINGLE STAGE SINGLE GAUGE LPG REG IP : 17 BAR OP : 14 BAR CYLINDER MOUNTED
 SINGLE STAGE DOUBLE GAUGE HIGH FLOW LPG REG IP : 25 BAR OP : 1.5 BAR
 FLOW 2.5 NM³/HR INLET SIZE 1/2" LH OUTLET SIZE 3/8" BSPM



RSG 43 S

AVAILABLE FOR ALL INDUSTRIAL GASES

PRODUCT CODE	PRODUCT CODE
49-OX	100-D-HL
100-D-OX	49-CO2
HOX-230	DU-CO2
HOX-12	49-AR
49-N2	DU-AR
DU-N2	49-AC
100-D-N2	HAC-20
49-H2	29-L
DU-H2	29-LW
100-D-H2	120-D-LPG
49-HL	120-D-PR
DU-HL	

49 - N₂



BRANDS AVAILABLE : HMP



PRODUCT	LPG VOT Manifolds
PRODUCT CODE	1171 to 1177
SPECIFICATIONS	Suitable for any number of SC type cylinders to be used at a time.
	Center distance between the consecutive lugs is
	300 mm (12") or 425 mm (17"), 2 x 2, 3 x 3, 4 x 4, 5 x 5, 6 x 6, 7 x 7, 8 x 8 etc.
	As depicted here to withstand a maximum working pressure of 17 bar.
	Made in MS Seamless schedule 40 pipes, if required can be made in SS.
BRANDS AVAILABLE	PUNEGAS



PRODUCT	High Pressure Adapters
PRODUCT CODE	1186 / 1187 / 1188
SPECIFICATIONS	These die-cast multi-point adaptors enable the connections of the cylinders fitted with self-closing valves to a high pressure system through a standard M.E.C.V thread with unreduced pressure and a high flow rate. The adaptors are fitted with a non return valve. The quick disconnecting arrangement coupled with a safety interlock ensures that the device can only be disconnected after turning off the gas flow. All adaptors featured here are available in 22 mm and 25.6 mm inlet seats and 3/8" or MECV outlet size.
BRANDS AVAILABLE	VEL / KOSAN / UE / SG

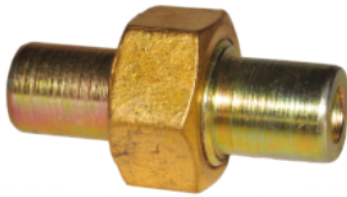


PRODUCT	Flexible Cylinder Pigtails
PRODUCT CODE	1220 to 1225
SPECIFICATIONS	Available in size length of 2ft, 3ft and 5ft. or as per customer's requirement.
	Used in cylinder connection to get more flexible between steady manifold and cylinder. This pigtails is specially used in Railway Pantry Car, Mobile Canteen Van etc. Also available with one side 3/8" BSPPF and other side FECV.
	These pigtails are available in SS Braiding, Suraksha, SAE 100R1, Gazflex Hose.
	All these pigtails are available with brass end fittings with brass crimping or MS fitting with MS hydraulic crimping. Pressure : 10 bar / 25 bar.
BRANDS AVAILABLE	PUNEGAS / UE SHURAKSHA



PRODUCT	Non Return Valve
PRODUCT CODE	1182
SPECIFICATIONS	Non return valve for VOT manifold 3 piece & 1 piece body Made in Brass Forging Size MECV x FECV
BRANDS AVAILABLE	UE / VEL / PUNEGAS / SG

Union Pin Set With Nut



PRODUCT	Fittings for LPG VOT Manifolds
PRODUCT CODE	1184 / 1185
SPECIFICATIONS	Union Pin Set with nut - available for 1/2" or 1" pipe size
BRANDS AVAILABLE	UE



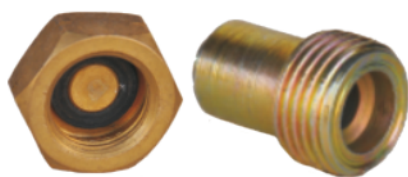
PRODUCT	F Valve
PRODUCT CODE	1260
SPECIFICATIONS	Main Cylinder Valve Brass Forged Body
	Used on cylinder manifold to control
	(shut off or open one one side of cylinder bank)
	Inlet - 3/4" NPT and outlet - MECV
BRANDS AVAILABLE	UE



PRODUCT	Quick Release Coupling
PRODUCT CODE	1320 / 1320A / 1321 / 1321B
SPECIFICATIONS	Available in various intel / outlet to suit costumers requirement
	made in MS chrome plated or SS body in all sizes.
BRANDS AVAILABLE	



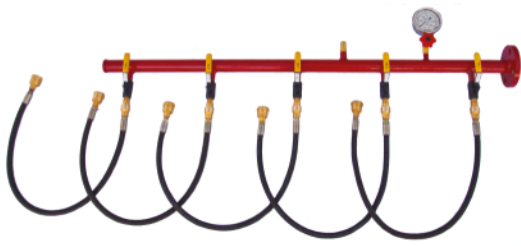
PRODUCT	Flap Type NRV
PRODUCT CODE	1429 / 1431 / 1432 / 1433 / 1434
SPECIFICATIONS	Available in sizes 1/2", 3/4", 1", 1 1/2", 2" threaded models.
	Made in Brass Forged body and SS 304 Body
BRANDS AVAILABLE	BOSS / VALSTOP FT



Dead Nut for LPG manifold

Manifold Lug

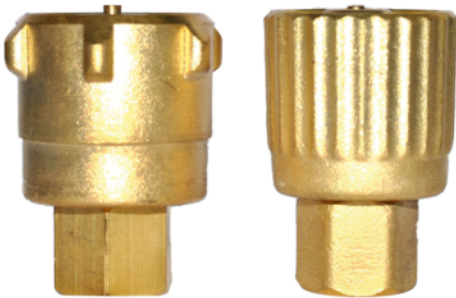
PRODUCT	Fittings for LPG VOT Manifolds
PRODUCT CODE	1183
SPECIFICATIONS	Maniolf LUG / MECV MS Adopter
	and also available
	Brass Forged FECV dead nut
BRANDS AVAILABLE	UE



PRODUCT	LPG LOT Manifolds
PRODUCT CODE	1178 / 1179
SPECIFICATIONS	Suitable for LOT type cylinders to be used at a time.
	Center distance between the consecutive lugs is
	300 mm (12") or 425 mm (17"), 5 x 5, 10 x 10, 15 x 15, 20 x 20.
	As depicted here to withstand a maximum working pressure of 27 bar.
	Made in MS Seamless schedule 80 pipes, if required can be made in SS.
BRANDS AVAILABLE	PUNEGAS



PRODUCT	LOT #300 Valve
PRODUCT CODE	1322 / 1323 / 1324
SPECIFICATIONS	Available in sizes 1", 1½" and 2" Flanged end #300 class
	Made in one piece CS forged WCB body
	Gas Safe Design
BRANDS AVAILABLE	VEL / PUNEGAS / UE



PRODUCT	Adaptor for LOT
PRODUCT CODE	1242 / 1242A / 1242U
SPECIFICATIONS	Available in size - inlet female 1 ¼" acme nut, LOT valve outlet female ¾"
	suitable for 19, 33, 47.5 kg LPG LOT cylinders.
	Made in forged brass body
	Ribbed or knurling body.
BRANDS AVAILABLE	VEL / PUNEGAS / UE



PRODUCT	Adaptor for LOT
PRODUCT CODE	1242SG H / 1242SG R
SPECIFICATIONS	Available in Size - Inlet Female 1¼" Acme Nut, LOT Valve Outlet Female ¾"
	Suitable for 19, 33, 47.5 KG LPG LOT Cylinders
	Works with 2 Thread & 3 Thread LOT Cylinder Valve
	1242SG H : Hex Type Chrome Plated Forged Brass Body
	1242SG R : Ribbed Type Forged Brass Body
BRANDS AVAILABLE	SG



PRODUCT	Pop Action Safety Relief Valve
PRODUCT CODE	1243 / 1243B / 1244
SPECIFICATIONS	Available in sizes ¼", ¾", ½", ¾" mounting.
	Pressure relief rating available in various capacities as per
	customers requirements.
	Made in forged brass body.
	Also known as Thermal Relief Valve.
BRANDS AVAILABLE	PUNEGAS / UE



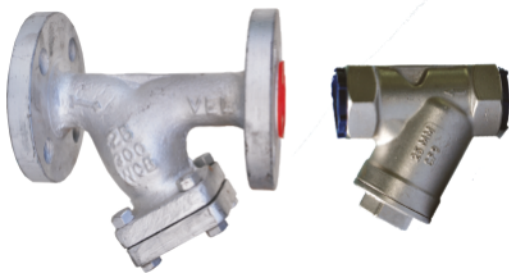
PRODUCT	Non Return Valve for LOT
PRODUCT CODE	1247 / 1247A / 1247U / 1248 / 1247SG H
SPECIFICATIONS	Non return valve for LOT manifold made in 2 piece body in brass forging. Available in sizes ½", ¾", 1" BSPM x BSPM or BSPM x BSPF Made in forged brass body with SS spring, nylon NRV. Also Available in HEX Type
BRANDS AVAILABLE	PUNEGAS / VEL / UE / VALSTOP / SG



PRODUCT	LOT Hoses
PRODUCT CODE	1240 / 1241
SPECIFICATIONS	Made as per customers requirements and specifications in R1, R2, R6 pressure rating of 160 bar with suitable end fittings in sizes ¾", ½", ¾" and 1" and various lengths. Working pressure 160 bar.
BRANDS AVAILABLE	BRILON / DUNLOP / SUPERHOZE / GASGUARD



PRODUCT	LOT Manifold Valve
PRODUCT CODE	1270 / 1271 / 1503
SPECIFICATIONS	Available in sizes ½", ¾" BSPF Made in 2 piece SS / CS WCB forged body in Screwed end Working pressure 27 or 17 bar.
BRANDS AVAILABLE	VEL / PUNEGAS / UE / SG



PRODUCT	Y Strainer # 300
PRODUCT CODE	1249 / 1249A / 1249B / 1249C / 1249D
SPECIFICATIONS	Available in sizes ½", ¾", 1" threaded or 1", 1 ½", 2" flanged ANSI # 300 models. Made in CS forged WCB body for flanged models and SS forged body for threaded models. Flame proof design. Working pressure 17 bar.
BRANDS AVAILABLE	VEL / PUNEGAS



PRODUCT	Flow Glass
PRODUCT CODE	1435 / 1435A / 1435B / 1436 / 1436A / 1436B / 1437
SPECIFICATIONS	Twin sight toughened glass built into CS forged WCB body available in sizes 1", 1 ½", 2" as per ANSI # 150 or 300. Working pressure 17 bar.
BRANDS AVAILABLE	PUNEGAS / VEL



PRODUCT	LPG LOT 450 kg Manifolds
PRODUCT CODE	1179B
SPECIFICATIONS	Suitable for LOT type two 450 kg cylinders being used at a time. Center distance between the consecutive lugs is 1 metre As depicted here to withstand a maximum working pressure of 27 bar. Made in MS Seamless schedule 80 pipes, if required can be made in SS.
BRANDS AVAILABLE	PUNEGAS



PRODUCT	Actuator Valve
PRODUCT CODE	1500
SPECIFICATIONS	Actuator Valve for Bullfinch Cylinder Valve Outlet made as per ISO standards having 3/4" end connection in Brass Body
BRANDS AVAILABLE	UE



PRODUCT	Quick Release Coupling
PRODUCT CODE	1501
SPECIFICATIONS	Male part of Liquid quick release adaptor in S.S body 3/4" BSPF
BRANDS AVAILABLE	UNITREAD UE / VEL



PRODUCT	Quick Release Coupling
PRODUCT CODE	1501A
SPECIFICATIONS	Female part of Liquid quick release adaptor in S.S body 3/4" BSPF
BRANDS AVAILABLE	UNITREAD UE / VEL



PRODUCT	Non Return Valve For LOT 450 kg
PRODUCT CODE	1515
SPECIFICATIONS	Non return valve for LOT manifold in 2 piece body in brass forging. Available in size 3/4" BSPF x 3/4" BSPF Made in forged brass body with SS spring, nylon NRV.
BRANDS AVAILABLE	VALSTOP



PRODUCT	Flexible Cylinder Pigtails for 450 kg Cylinder
PRODUCT CODE	1504
SPECIFICATIONS	2 mtr long liquid handling hose 3/4" & 1/2" end connection
	Pressure rating - 160 bar
	Please specify length and end fitting size.
BRANDS AVAILABLE	SUPERHOZE / BRILON



PRODUCT	Manifold Isolation Ball Valve
PRODUCT CODE	1503
SPECIFICATIONS	LOT isolation ball valve 3/4" & 1/2" BSPF end connection CF8 SS body
	Please note set of 2 valves required for installation
BRANDS AVAILABLE	PUNEGAS / VEL / UE



PRODUCT	Pole Nut Connector & Dead Nut
PRODUCT CODE	1507
SPECIFICATIONS	Dead nut for vapour outlet in 1/2" BSP MS CP Body
	POL nut coupler 0.885" POL connection for vapour outlet in brass body
BRANDS AVAILABLE	VEL



PRODUCT	Filling Gun for 450 kg Cylinder
PRODUCT CODE	SPL
SPECIFICATIONS	2 meter hose connected to ball valve and filling nozzle in forged brass body
	Inlet 1/2" or 3/4" as required
BRANDS AVAILABLE	UE



PRODUCT	Filling Gun for 47.5 kg Cylinder
PRODUCT CODE	SPL
SPECIFICATIONS	2 meter hose connected to ball valve and filling nozzle in forged brass body
	Inlet 1/2" or 3/4" as required
BRANDS AVAILABLE	UE



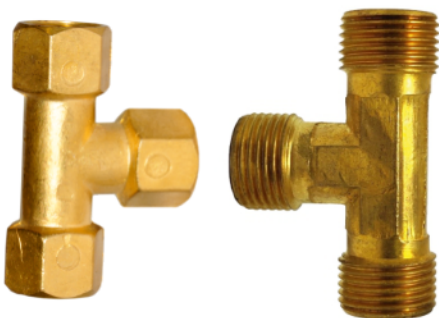
PRODUCT	Pilot Burner					
PRODUCT CODE	1117					
SPECIFICATIONS	Low Pressure (PL 1) / High Pressure (PL 2) brass forged pilot burners for commercial equipment. Suitable for LPG and Natural Gas. Inlet 3/8" BSPM CU.					
	No.	Length	Diameter	Working/Pr	Consumption/Hr	Heat Output
	PL-1	92 mm	16 mm	0.035 Kg/cm ²	0.043 Kg	480 kcal/hr
		3.62 in	0.63 in	0.50 psig	0.094 lbs	1,895 btu/hr
	PL-2	92 mm	16 mm	0.3 Kg/cm ²	0.400 Kg	4,500 kcal/hr
		3.62 in	0.63 in	4.50 psig	0.950 lbs	17,765 btu/hr
BRANDS AVAILABLE	UE					



PRODUCT	Adapters & Couplings in MS, SS or Brass	
PRODUCT CODE	1131 to 1135	
SPECIFICATIONS	There are individual fittings for fixing on M.S. pipeline for obtaining different types of outlets and are used to connect valves regulators and any other fittings on to the pipeline.	
	1/8" MT x MCV	1/2" MT x MCV
	1/4" MT x MCV	3/4" MT x MCV
	3/8" MT x MCV	1" MT x MCV
BRANDS AVAILABLE	UE	



PRODUCT	Adapters & Couplings in MS, SS or Brass	
PRODUCT CODE	1151 to 1159	
SPECIFICATIONS		
	1/8" MT x 1/4" CU	1/2" MT x 1/2" MT
	1/4" MT x 3/8" CU	1/2" MT x 3/8" CU
	1/8" MT x 3/8" CU	3/8" MT x 3/8" MT
	3/8" MT x 3/8" CU	1" MT x 3/8" MT
	3/8" BSPF x 1/4" MT	1" MT x 3/8" CU
BRANDS AVAILABLE	UE	



PRODUCT	3 Way T
PRODUCT CODE	1136
SPECIFICATIONS	Forged Brass T connectors in 3/8" male or female end connection
BRANDS AVAILABLE	UE



PRODUCT	Bunsen Burner in Brass or SS with Nozzle
PRODUCT CODE	1111 / 1112
SPECIFICATIONS	Ideal for use in Laboratories-Educational Research and Pathological Laboratories. Most suitable to keep liquids boiling in urns, kettles etc. Flame can be controlled by a tap installed in the line or installed on the burner. Heavy metal base prevents toppling. Brass burner tube warrants long life. Also available in stainless steel tube and base. Attractive electroplated finish prevents corrosion due to fumes. Available in two sizes.
BRANDS AVAILABLE	UE



PRODUCT	Bunsen Burner in Brass or SS with Tap
PRODUCT CODE	1111 / 1112
SPECIFICATIONS	Optimum
	Model Working Consumption Rated
	No. Length Diameter Pressure Per Hour Heat Output
	B-1 150 mm 80 mm 0.035 Kg/cm ² 0.06 Kg 680 kcal/hr
	6.0 in 3 in 0.50 psig 0.13 lbs 2,700 btu/hr
	B-2 150 mm 80 mm 0.035 Kg/cm ² 0.1 Kg 1,250 kcal/hr
	6.0 in 3 in 0.50 psig 0.235 lbs 4,950 btu/hr
BRANDS AVAILABLE	UE



PRODUCT	Bunsen Burner Taps
PRODUCT CODE	1113 / 1114
SPECIFICATIONS	Forged brass bunsen burner taps available in 3/8" BSPM or 1/2" BSPM x nozzle
BRANDS AVAILABLE	UE



PRODUCT	Table Terminals
PRODUCT CODE	1115
SPECIFICATIONS	To be used as a junction on table for connecting Bunsen Burner Taps for laboratory use or kitchen platforms.
	Inlet 3/8" CU x Outlet 4 Nos. 1/8" BSPF
	Inlet 1/2" CU x Outlet 2 Nos. 1/8" BSPF
BRANDS AVAILABLE	UE



PRODUCT	New Terminals
PRODUCT CODE	1116
SPECIFICATIONS	Inlet 1/2" BSP TM Outlet 1/8" BSPF (2 Nos.)
	Inlet 3/8" BSP TM Outlet 1/8" BSPF (2 Nos.)
	Used as a Central Terminal for Gas Tap in Pipeline for laboratory use or kitchen platforms.
BRANDS AVAILABLE	UE

MAST LOT-

Ready to use, Simple & Safe.



MAST LOT standard model meets stringent norms of IS 6044 part (I) & (ii), OISD 162, Gas Cylinders Rules 2015.

MAST LOT requires less foot print area compared with traditional LPG LOT system. Assembled MAST LOT skid is robust, strong and corrosion resistant having value for money spent.

Inbuilt PRS station (1.2 kg/cm²) set pressure with all safety. MAST LOT systems reduces onsite erecting, installation and start up time from 4 - 6 weeks to one day only.

Enhances safety as leakage points are very few compared to conventional LOT systems and MAST LOT becomes the most reliable option. Hydro, Pneumatic & LPG firing test run happens at our factory itself to ensure smooth and immediate operation on site.

MAST LOT system

- a. Skid Mounted LOT System with 40 Kg/hr Dry-Type Vaporiser & First stage Pressure Regulation System.
- b. Best Suited for Users with off-take of 30 Kg/hr to 50 Kg/hr.
- c. Duly Mounted on Heavy Duty Fabricated MS Structural Skid.
- d. Over pressure emergency cut-off system for entire skid.
- e. LPG pressure safety relief valve - 15 bar.

DRY TYPE LPG VAPOURISING & REGULATING SYSTEM WITH CABINET



FAS 2000.40

Dry Type vaporizer



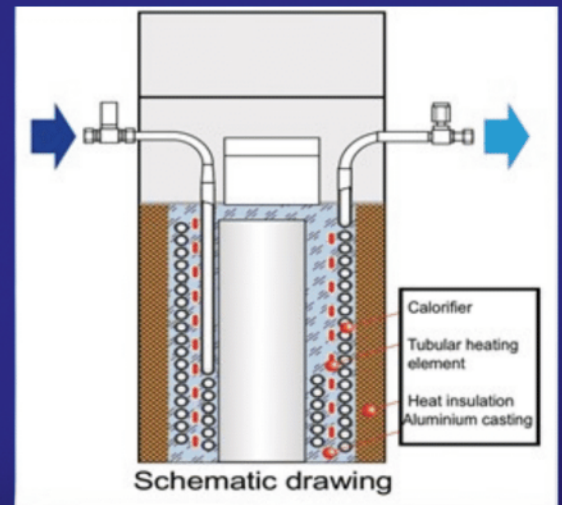
The vaporizer units FAS 2000-40 is constructed for a stable LPG supply in an independent gas supply system with low capacities.

Characteristics :

- Independency of Gas mixture propane, butane or Propane- Butane- Mixture
- 2-stage-safety system (1 solenoid valve in vaporizer inlet)
- Connection pipe screwing inlet 12mm/ outlet 12mm threaded.
- Plug-in version ready for connection.
- Suitable for installation in the hazardous areas of zone 2.
- Ignition protection type CE Ex II 3G Ex nR II T4



CE European standard products
No PESO/ CCOE permission
required for installation
in LPG LOT system



Technical data

Manufacture	Fas Germany
Type	Dry type vaporizer
Capacity	40 kg/hr
Gas temperature outlet	max. 70 °C
Connection of version 40 kg/hr	4.4 kw, 230 V, 50/60 Hz, 20 A, 1 Phase
Max pressure	25 bar
Safety Valve	Rego make PRV set @ 225 PSI

Operation Parameter

Diameter of pipe	12 mm
Cable Cross-section not less than	2,5 mm ²
Dimension/ Weight	518*163*355mm, 32,7 kg
Warranty	24 Months

Dry-Type Vaporizer , Type FAS 2000



Capacity 100 kg/hr

FAS Vaporizer

LPG VAPORISER - WATERLESS MODELS
DRY ELECTRIC TYPE



Capacity 170 kg/hr

Gas Leak Detectors



PRODUCT	Portable Leak Detector
PRODUCT CODE	1398
SPECIFICATIONS	BH-90A Portable Single Gas Detector can make continuous detection to combustible gases. Ideal for production or maintenance teams to carry and check in leakages areas which are not accessible. The detector, adopting excellent-quality sensor, make detection in the way of natural diffusion. It has good sensitivity and reproducibility. The detector adopts Embedded MCU controller, easy to operate. Combustible Gas like Methane, LPG, Propane, Butane etc. Response time < 60s Accuracy ± 5% F.S Sensor Life 10000 hours
BRANDS AVAILABLE	BOSEAN

PRODUCT	Domestic Leak Detector
PRODUCT CODE	1397
SPECIFICATIONS	Gas detector for residences. It is designed to detect the concentration of combustible gas. GAS GUARD, a simple electronic device for early warning of cooking gas leaks. This microprocessor based, low priced, wall mounted device is specially designed for domestic application and can be fitted anywhere near the source of gas. Response time is less than 10 sec. One minute initial warm up delay. Long Sensor Life. Visible & audible alarm. Buzzer Sound level 90 dB to 30cm. Safe Alarm Point -10% LEL* of Methane i.e. 1500ppm. AUX. output for external buzzer. Alarm Mode - Latched or Unlatched (by default Latched) works on 230V AC, 50Hz.
BRANDS AVAILABLE	GAS GUARD / GASVIGIL



Gas Leak Detection System for Commercial, Industrial Gas Installations

Gas leak detection systems used for Gas Safety checking for leaks in gas line, storage area, burner area, furnace, kitchens etc. These products can detect even the slightest of gas Leak and set the alarms at the right time. Many industrial and commercial establishments have installed these products, as these are easy to handle.

Some of the areas where these Gas Leak Detection Systems are used are as follows:

1. Bulk storage yards
2. Gas manifolds
3. Production areas in industrial plants
4. Piped gas facilities in multi-storied apartments
5. Cooking areas like kitchen in homes, hotels, canteen and food courts

Types of Leak Detection systems available:

- 1) Model GV-09: PESO/CMFIR approved flameproof gas detector without display (LPG / PNG) with analog control panel
- 2) Model GV-108: Flameproof Sensor PESO/ CIMFR approved with Digital Display with addressable processing unit.
- 3) Model GV-09+: CE & ROHS Approved Gas Monitoring Panel (12 channel) with color addressable LCD Display, Self-Diagnosis for Faulty Sensors, inbuilt Siren cum Flasher for warning.



GAZWARN

STAND ALONE GAS LEAK DETECTOR

PRODUCT	Stand Alone Gas Leak Detector for LPG / Natural Gas
PRODUCT CODE	1399
SPECIFICATIONS	Stand Alone Gas Leak Detector Ready to plug and play. Model : GZW - 1
	Features: Can detect even the slightest of gas leak and set the alarm immediately.
	Area where it can be installed: Gas Manifolds, Production areas in Industrial plants, Cooking areas like Kitchens in Hotels, Industries canteens and Food courts, Malls etc.
	Enclosure type: Flameproof PESO approved
	Note: Hooter will sound alarm in case of gas leakage near gas sensor only.
	Area covered 1 sq. mtr & Sound above 50 dB.
	Power Supply : 230 V AC power supply Single Phase
BRANDS AVAILABLE	GAZWARN

VANAZ Pressure Reducing Station For LPG and Natural Gas

High Pressure Single Stream Double Stage (SSDS)



High Pressure Double Stream Single Stage (DSSS)



Skid Mounted Single Stage Single Stream Low Pressure Gas Train (SSSS)



**VANAZ City gas distribution
Meter regulating stations for
Commercial Customers**



**Low Pressure Pressure Reducing system with
safety solenoid Valves along with Gas meter &
Bypass Systems for automatic burners**

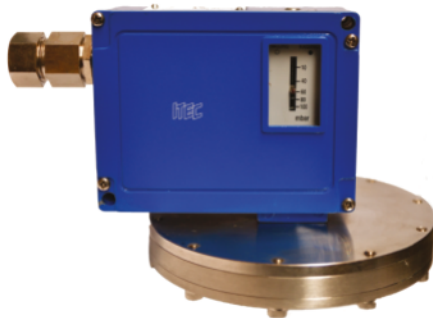
This can also suffice for reticulated systems, imported automatic burners and restaurants on LPG / NG



PRODUCT	Pressure Switch
PRODUCT CODE	RT 116 / RT 112
SPECIFICATIONS	RT 116 series pressure switch in IP : 65 enclosure suitable for LPG application having range from 1 to 10 bar to set at 7 bar with 5 amp 250 V SPDT contacts connection 3/8" BSPM
	RT 112 series pressure switch in IP 65 enclosure suitable for LPG application having range from 0.1 to 1.1 bar to set at 0.5 bar with 5 amp 250 V SPDT contacts connection 3/8" BSPM
BRANDS AVAILABLE	INDFOSS / SWITZER / WIKA



PRODUCT	Pressure Switch
PRODUCT CODE	PS050-PP / PS0150-PP / PS500-PP
SPECIFICATIONS	Pressure Switches are designed for switching a circuit on, off or over if the pressure actual value changes in relation to the set point. PS050-PP Positive Pressure Switch range 2.5 - 50 mbar Pmax 500 mbar PS0150-PP Positive Pressure Switch range 30 - 150 mbar Pmax 500 mbar PS500-PP Positive Pressure Switch range 100 - 500 mbar Pmax 1 bar Pressure Connection 1/4" BSP
BRANDS AVAILABLE	GECA



PRODUCT	Pressure Switch
PRODUCT CODE	PS60 / PS100
SPECIFICATIONS	Weatherproof pressure switch IP : 67 having range in models 10-100 mbar or 50 - 600 mbar Working pressure 7 bar Connection 3/8" BSPM PS600 : Pressure Range 50 - 600 mbar PS100 : Pressure Range 10 - 100 mbar
BRANDS AVAILABLE	ITEC



PRODUCT	Pressure Switch
PRODUCT CODE	PS10 / PS16 / PS20 / PS30
SPECIFICATIONS	Auto rest pressure switch IP : 67 having range in models 0 - 10 bar or 0 - 16 bar or 5 - 20 bar or 5 - 30 bar Working pressure 30 bar max. Connection 1/4" BSPF PS10 : Pressure Range 0 - 10 bar PS16 : Pressure Range 0 - 16 bar PS20 : Pressure Range 5 - 20 bar PS30 : Pressure Range 5 - 30 bar
BRANDS AVAILABLE	ITEC



PRODUCT	Dirt Trap for Liquid / Vapour LPG	
PRODUCT CODE	1430	1430 A
SPECIFICATIONS	#300 Class / #150 Class	#300 Class / #150 Class
SIZE	50NB / 40NB / 25NB	50NB / 40NB / 25NB
DIMENSION	300 x 450 mm	180 x 300 mm
	Maximum working pressure 17 bar for # 150 and 27 bar for #300 Includes ball valve for drain.	
BRANDS AVAILABLE	PUNEGAS	



PRODUCT	Flashback arrester with non return valves
PRODUCT CODE	1420
SPECIFICATIONS	Material : Brass Forging
	Materials compatible to fluids. Environment friendly
	Connections : Standard in 3/8" BSP RHF / RHM.
	Wide range of external, internal as well combination of threads for Industrial & Domestic usage
	Available in 2 models - 20 bar & 200 bar test pressure.
BRANDS AVAILABLE	UE



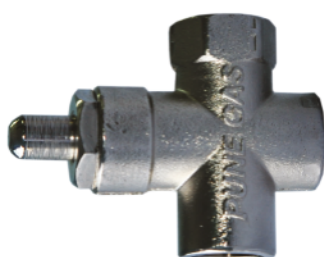
PRODUCT	Flame Arrestor
PRODUCT CODE	1421 to 1427
SPECIFICATIONS	Available in 1/2", 3/4", 1", 1 1/2", 2" BSPF Threaded
	SS / MS seamless metal tubes
	Suitable for LPG / NG / Nitrogen
	Only for prevention of flashback, not suitable as non return valve
	Design : 5/7 layers of SS mesh
BRANDS AVAILABLE	VEL



PRODUCT	Flame Arrestor
PRODUCT CODE	1421 to 1427
SPECIFICATIONS	Available in 1/2", 3/4", 1", 1 1/2", 2" ASA #150 or ASA #300 flanged body
	SS / MS seamless metal tubes and metal flanges
	Suitable for LPG / NG / Nitrogen
	Only for prevention of flashback, not suitable as non return valve
	Design : 5/7 layers of SS mesh
BRANDS AVAILABLE	VEL



PRODUCT	Pressure Gauges
PRODUCT CODE	1401 to 1404
SPECIFICATIONS	Available in various pressure rating to suit customers requirements, made in SS body with 3/8" bottom inlet
	Please specify pressure rating and with or without glycerine.
BRANDS AVAILABLE	ITEC / PUNEGAS / UE



PRODUCT	Pushcock Button Holder For Pressure Gauge
PRODUCT CODE	1406
SPECIFICATIONS	Pressure gauges are available with or without siphon, isolation needle valves or push type valves.
	Size 3/8" BSPF
BRANDS AVAILABLE	PUNEGAS



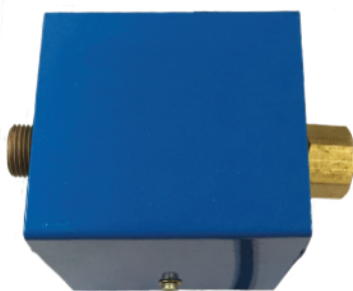
PRODUCT	Temperature Indicator Controller Ignition Panel for Burner Control
PRODUCT CODE	1319
SPECIFICATIONS	TICIFIS is used for Automatic Burner controlling the temperature and Flame failure for Burners which work as per PLC
	Temperature Indicator Controller Ignition flame sensing panel for burner with Solenoid valves and flame arrester
BRANDS AVAILABLE	LA QUANTA



PRODUCT	Automatic Electronic Changeover Panel
PRODUCT CODE	AECF
SPECIFICATIONS	For switching from one bank to another bank with high & low pressure alarm
	When the pressure in the one of the gas bank goes below or above certain limits, Pressure transmitter will sense the same and send signal to the solenoid valve it will operate and supply of gas will be cut off from the bank and supply of gas will resumed from another bank automatically. Green Light will indicate the normal working of supply of gas from the Gas bank and red light will flash in case of pressure goes Below or Above certain limits.
BRANDS AVAILABLE	LA QUANTA



PRODUCT	Pressure Alarm System
PRODUCT CODE	1438
SPECIFICATIONS	High / Low / Dual Combo Pressure Switch with alarm for Manifolds or Pipelines
BRANDS AVAILABLE	LA QUANTA



PRODUCT	Electric CO ₂ Heater 230 V
PRODUCT CODE	COH
SPECIFICATIONS	For carbon dioxide individual cylinder manifolds
	Size 1/2" male x female for CO ₂ cylinder
BRANDS AVAILABLE	SE



PRODUCT	Siphon for Pressure Gauges
PRODUCT CODE	1401 A
SPECIFICATIONS	SS seamless tube siphon for pressure gauges in
	3/8" male x 3/8" female end connections
BRANDS AVAILABLE	ITEC

Rotogauges for bulk LPG bullets, Thermostats & Heating Coils for Vaporisers, and all fitting for Decanting, Unloading Hoses, Acme Couplings and Clamps are also available. We also test and certify LPG Safety Valves, Vaporisers, Unloading Hoses & LPG Bullets as per Chief Controller of Explosives Rules (PESO).

We carry out overhead & mounded storage installations for LPG in India and Abroad. We also offer consultancy for setting up of bottling plants for filling LPG cylinders.



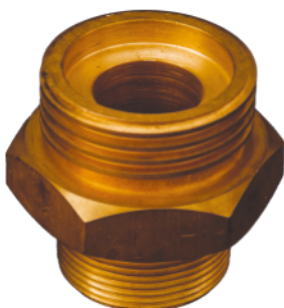
PRODUCT	Safety Relief Valve for Bulk Bullets
PRODUCT CODE	SPL
SPECIFICATIONS	Safety Relief Valve for Bulk Bullets made as per CCOE / PESO standards
	Sizes available 1½" or 2"
BRANDS AVAILABLE	ANIL / KOSAN / CHANDRA



PRODUCT	Temperature gauge
PRODUCT CODE	1405
SPECIFICATIONS	SS body, back entry ½" size. Maximum temperature 150°C
BRANDS AVAILABLE	ITEC



PRODUCT	Pop Action Safety Relief Valve
PRODUCT CODE	1243 / 1244
SPECIFICATIONS	Available in sizes ¾" mounting
	Pressure relief rating available in various capacities to suit customers requirements. Made in forged brass body.
	Also known as thermal relief valve Made as per CCOE / PESO standards
	For Oil Company bottling plants.
	Outlet threading suitable for vents.
BRANDS AVAILABLE	ANIL / KOSAN



PRODUCT	Acme Nuts & Couplings
PRODUCT CODE	1265 / 1266
SPECIFICATIONS	Acme coupling made as per CCOE/PESO Standards
	Used for Tank installations.
BRANDS AVAILABLE	SGI



PRODUCT	Unloading & Decanting Hoses
PRODUCT CODE	1261 to 1264
SPECIFICATIONS	Size: 4mts & 5mts length and 1½" - 2" end fittings.
	Used for bottling plants and unloading LPG in Industries
	Bulk LPG installations. Certified as per PESO / CCOE standards
BRANDS AVAILABLE	DUNLOP / SUPERHOZE / ALFAGOMMA / PARKER / GATES



PRODUCT	Copper Burner Pigtails
PRODUCT CODE	1190 to 1197
SPECIFICATIONS	Available in length size 12" - 18" - 24" - 36" - 48" - 60". For 3/8" BSPF connections. 8 mm Copper tube with forged brass bullnoze and nut.
BRANDS AVAILABLE	UE



PRODUCT	Copper Cylinder Pigtails
PRODUCT CODE	1200 / 1201 / 1202
SPECIFICATIONS	For MECV Connections. 8 mm Copper tube with forged brass bullnoze and nut. In various lengths Used for LPG and Industrial Gases.
BRANDS AVAILABLE	UE



PRODUCT	Flexible Burner Pigtails
PRODUCT CODE	1210 to 1214
SPECIFICATIONS	Available in 3/8" BSPF - Length 24", 48", 72" & 120" or as per customer requirements. These pigtails are available in SS braiding, Suraksha, SAE 100R1 or 8 mm Hose. All these pigtails are available with forged brass end fitting with brass crimping or MS fittings with MS hydraulic crimping Working pressure Orange 10 bar, Black 25 bar
BRANDS AVAILABLE	PUNE GAS / UE SURAKSHA / SUPERHOZE



PRODUCT	Flexible Cylinder Pigtails
PRODUCT CODE	1220 to 1225
SPECIFICATIONS	Available in 24", 36" and 60" or as per customer's requirement. Used in cylinder connection to get more flexibility between steady manifold & cylinder. This pigtail is specially used in railway Pantry Car, Mobile Canteen Van etc. Also available with one side 3/8" BSPPF and other side FECV. These pigtails are available in SS Braiding, Suraksha, SAE 100R1 8 mm Hose All these pigtails are available with forged brass end fittings with brass crimping or MS fittings with MS hydraulic crimping. Working pressure Orange 10 bar, Black 25 bar
BRANDS AVAILABLE	PUNE GAS / UE SURAKSHA / SUPERHOZE

Liquid off-take hoses 1m Working pressure 160 bar



BRILON
Product Code 1240



GASGUARD
Product Code 1241 G



DUNLOP
Product Code 1241

Heat resistant flanged end hoses

R2 Industrial Gas Hose High Pressure



PRODUCT	Industrial Gas Hoses
PRODUCT CODE	1230 to 1234 & 1245
SPECIFICATIONS	Manufactured in Rayon or wire braided hose with standard end fittings as per customer's specifications. Stainless steel braided Teflon hoses for ammonia and Carbon dioxide. Stainless steel or G.I. braided flexible high pressure hoses for industrial gases. Internal tube could be of teflon, nylon or rubber in various forms for all gases.
TEMPERATURE RANGE	For Hydraulic Oil Lines: -40°C to 100°C For water emulsions (a) Pressure Lines: Max. Temp. Limit + 93°C (b) Return Lines: Max.Temp. Limit + 82°C
	We also manufacture all types of pneumatic hoses with different connections in different grades and sizes as per requirements up to 2" size and pressure of 250 kg/cm ²
BRANDS AVAILABLE	SURAKSHA / ALFA GOMMA / SUPERHOZE / DUNLOP / PUNEGAS

JACK Hose ¼" or ½" BSPF 1 m
Working pressure 400 bar
Product Code 1245



400 bar/6000 psi pressure rating, thermo plastic hose for industrial gases in various end fittings and lengths.

Low Pressure ½" / ¾" / 1"
Vapour Hose for automatic burners
Working pressure 10 bar
Product Code 1230 to 1236



PRODUCT	Low Pressure Hoses For Imported Automatic Burners.
PRODUCT CODE	1230 to 1236
SPECIFICATIONS	Made as per customer's specifications in SS braiding with Rayon rubber hose and end fittings in brass or MS or SS fittings. Available in various lengths Please specify length and end fittings
BRANDS AVAILABLE	SE

We can manufacture and deliver all kinds of hoses in a variety of materials, from ¼" size to 2" from pressures of 100 mbar to 250 bar, with variety of end fittings in MS, Brass or SS.

2 meter, ½" Vapour Hose for 450 kg cylinders
Working pressure 160 bar
Product Code 1511



2 meter, ¾" Liquid Hose for 450 kg cylinders
Working pressure 160 bar
Product Code 1504



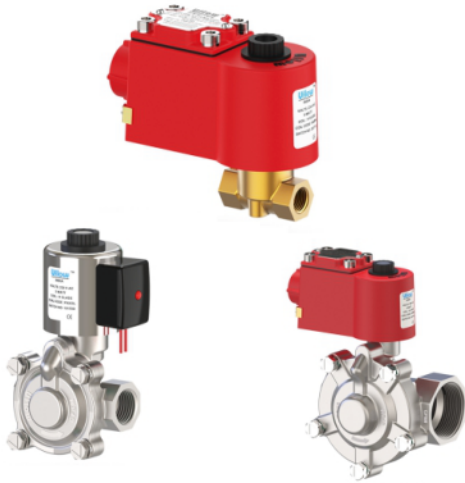
BRAND : BRILON / SUPERHOZE

LOT HOSE FOR 450 KG CYLINDER

04

VALVES





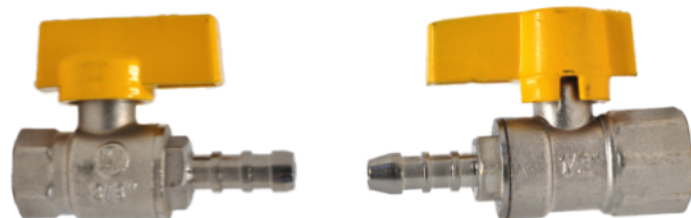
PRODUCT	Solenoid Valves
PRODUCT CODE	1344 to 1367
SPECIFICATIONS	Used for controlling flow of gas with connectivity to PLC or Sequence controller. Made in modular in construction facilitating the user to select valves for various application from wide range and different construction of Solenoids independently. Built in aluminium, brass or SS bodies which are weather proof and Flame proof.
	Available in 2/2 way Normally Open / Normally Closed
	Power supply : 230 V AC / 12 V DC / 24 V DC
	Pressure range : 0.5 - 12 bar (other range upto 40 bar available on request)
	Body : Aluminium , SS 304 and Brass
	Size : ¼" to 2" BSPF screwed end and 3" - 4" Flanged end ASA #150
BRANDS AVAILABLE	UFLOW



PRODUCT	Excess FlowCheck Valve
PRODUCT CODE	1327 / 1328 / 1329 / 1330
SPECIFICATIONS	In brass body available in ¾", 1", 1½", 2" sizes with different flow capacities ranging from 18GPM to 54 GPM. Essential safety device to protect pressurised tank or container against loss of its contents in the event of a pipeline fracture. Permits flow in either direction but controls its rate in one direction when it exceeds another.
	Working Pressure 17 bar
	Available in screwed type, flanged type or sandwich type
BRANDS AVAILABLE	ANIL / KOSAN



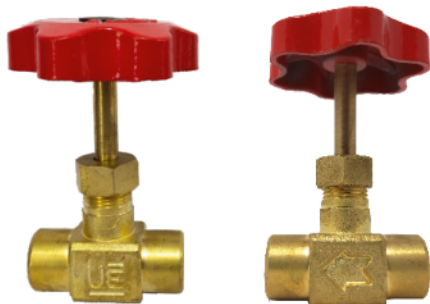
PRODUCT	Quarter Turn Ball Valve With Nozzle
PRODUCT CODE	1279
SPECIFICATIONS	These two piece LPG Ball Valves have their bodies forged in brass, chrome plated and working parts from stainless steel. Seats and gland washers are P.T.F.E. These valves are full bore, anti-static and fire safe. The lever and spindle have a dual lock system for quarter turn operation. Available in nozzle outlet for hose connections.
	Inlet size ¼", ⅜" or ½" BSPF
	Outlet size 8 mm nozzle Made as per EN 331 standard
BRANDS AVAILABLE	SG



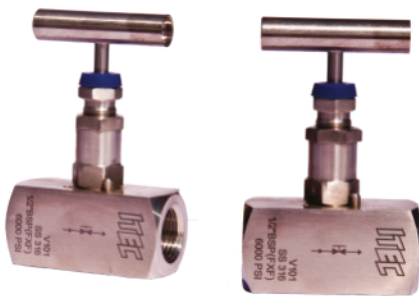
PRODUCT	Quarter Turn Ball Valve Screwed Full Bore
PRODUCT CODE	1278 / 1278 EN
SPECIFICATIONS	These two piece LPG Ball Valves have their bodies forged in brass, chrome plated and working parts from stainless steel. Seats and gland washers are P.T.F.E. These valves are full bore, anti-static and fire safe. The lever and spindle have a dual lock system for quarter turn operation.
	Inlet size ¼", ⅜", ½", ¾" or 1" BSPF
	Outlet size ¼", ⅜", ½", ¾" or 1" BSPF
	Made as per EN 331 standard
BRANDS AVAILABLE	ASTRON / SG



PRODUCT	Needle Control Valves
PRODUCT CODE	1250 to 1254
SPECIFICATIONS	Brass forged body needle control valves used for controlling flow of gas to burners in kitchen equipment or from line to cooking platform.
	Sizes available $\frac{3}{8}$ " MT x $\frac{3}{8}$ " CU
	$\frac{1}{2}$ " MT x $\frac{3}{8}$ " CU
	$\frac{1}{2}$ " MECV x $\frac{1}{2}$ " MECV
	$\frac{1}{2}$ " MT x $\frac{1}{2}$ " MT
	Working Pressure 15 bar
BRANDS AVAILABLE	VEL / UE



PRODUCT	Needle Control Valves for Pressure Gauges
PRODUCT CODE	1255
SPECIFICATIONS	Brass forged body needle control valves used for controlling flow of gas to pressure gauge mounted above it
	Sizes available $\frac{3}{8}$ " BSPF x $\frac{3}{8}$ " BSPF
	Working Pressure 15 bar
BRANDS AVAILABLE	VEL / UE



PRODUCT	High Pressure Needle Control Valves
PRODUCT CODE	1256 / 1257 / 1258 / 1259
SPECIFICATIONS	Stainless steel heavy duty body, high pressure needle control valves having
	working pressure 400 bar (6000 PSI)
	Size Available $\frac{1}{4}$ " BSPF x $\frac{1}{4}$ " BSPF
	$\frac{3}{8}$ " BSPF x $\frac{3}{8}$ " BSPF
	$\frac{1}{2}$ " BSPF x $\frac{1}{2}$ " BSPF
	1" BSPF x 1" BSPF
BRANDS AVAILABLE	ITEC



PRODUCT	LPG Cylinder Valve VOT
PRODUCT CODE	1368
SPECIFICATIONS	Unreduced pressure brass forged self closing quick filling LPG cylinder valves for VOT cylinders suitable for 25.6 mm cylinder regulator outlet.
	Inlet $\frac{3}{4}$ " NPT suitable for any size of cylinders
	Maximum vapour withdrawal 700 g/hr
	Test Pressure 17 bar as per BS EN: 13152 / IS: 8737
BRANDS AVAILABLE	KOSAN



PRODUCT	LPG Cylinder Valve LOT
PRODUCT CODE	1369
SPECIFICATIONS	Handwheel operated forged brass body male outlet $\frac{1}{4}$ " ACME with safety liquid withdrawal type facility coupled with built in excess flow device and safety relief valve.
	Test Pressure 17 bar as per BS EN: 13153 / IS: 8737
	Maximum liquid withdrawal rate 5 kg/hr
BRANDS AVAILABLE	KOSAN



PRODUCT	3 Piece Design Ball Valve IC Square
PRODUCT CODE	1290 to 1294
SPECIFICATIONS	3 Piece Design Ball Valve in flanged, screwed or socket welded WCB CS or SS CF8 body. Made as per design standard IS 9890 : 1981 full bore investment casting Pressure rating BS 6755 Part I API 598 IS 6157 : 1981 Flange dimensions as per ANSI B 16.5 and ASA 150 Screwed dimensions as per ANSI B 1.20.1 and BS 21 / IS 554 Face to face as per IS 9884 : 1981 Size available 1" / 1½" / 2" / 3" / 4"
BRANDS AVAILABLE	VEL / PUNEGAS



PRODUCT	1 Piece Design Ball Valve Gas Safe
PRODUCT CODE	1322 to 1325
SPECIFICATIONS	1 Piece Design Ball Valve in flanged end in WCB CS body in #150 or #300. Made as per design standard IS 9890 : 1981 full bore cast steel having Pressure rating BS 6755 Part I API 598 IS 6157 : 1981 Flange dimensions as per ANSI B 16.5 and ASA 150 or 300 Face to face as per IS 9884 : 1981 Size available 1" / 1½" / 2" / 3"
BRANDS AVAILABLE	VEL / PUNEGAS



PRODUCT	2 Piece Design Screwed Ball Valve Full Bore
PRODUCT CODE	1270 to 1274
SPECIFICATIONS	2 Piece Design Ball Valve in screwed WCB CS body or SS CF8 body. Made as per design standard IS 9890 : 1981 full bore investment casting having pressure rating BS 6755 Part I API 598 IS 6157 : 1981 Screwed dimensions as per ANSI B 1.20.1 and BS 21 / IS 554 Size available ½" / ¾" / 1" / 1½" / 2"
BRANDS AVAILABLE	VEL / PUNEGAS





PRODUCT	1 Piece Design Ball Valve Gas Safe
PRODUCT CODE	1322 UE to 1325 UE
SPECIFICATIONS	1 Piece Design Ball Valve in flanged end in WCB CS body in # 150 or # 300
	Made as per design standard IS 9890 : 1981 full bore cast steel having
	Pressure rating BS 6755 Part I API 598 IS 6157 : 1981
	Flange dimensions as per ANSI B 16.5 and ASA 150 or 300
	Face to face as per IS 9894 : 1981
	Size available 1" / 1½" / 2" / 3"
BRANDS AVAILABLE	UE



PRODUCT	2 Piece Design Screwed Ball Valve Full Bore
PRODUCT CODE	1270 UE to 1274 UE
SPECIFICATIONS	2 Piece Design Ball Valve in screwed WCB CS body or SS CF8 body..
	Made as per design standard IS 9890 : 1981 full bore investment casting
	having pressure rating BS 6755 Part I API 598 IS 6157 : 1981
	Screwed dimensions as per ANSI B 1.20.1 and BS 21 / IS 554
	Size available ½" / ¾" / 1" / 1½" / 2"
BRANDS AVAILABLE	UE



PRODUCT	1 Piece Design Ball Valve Gas Safe
PRODUCT CODE	1322A SG to 1324A SG
SPECIFICATIONS	1 Piece Design Ball Valve in flanged end in WCB CS body in # 150
	Made as per design standard IS 9890 : 1981 full bore cast steel having
	Pressure rating BS 6755 Part I API 598 IS 6157 : 1981
	Flange dimensions as per ANSI B 16.5 and ASA 150
	Face to face as per IS 9894 : 1981
	Size available 1" / 1½" / 2"
BRANDS AVAILABLE	SG



PRODUCT	2 Piece Design Screwed Ball Valve Full Bore
PRODUCT CODE	1270A SG to 1272A SG
SPECIFICATIONS	2 Piece Design Ball Valve in screwed WCB CS body
	Made as per design standard IS 9890 : 1981 full bore investment casting
	having pressure rating BS 6755 Part I API 598 IS 6157 : 1981
	Screwed dimensions as per ANSI B 1.20.1 and BS 21 / IS 554
	Size available ½" / ¾" / 1"
BRANDS AVAILABLE	SG

05

TORCHES





Delux Gas (Propane or Butane) Torches in compliance with regulations ISO EN 9012 Part No. 1550 A,B & C

Burner Head	Extension	Weight (g)	K Cal / hr	Kw	Kj / hr	Working Pressure (bar)	Max Consumption Kg/h
50	200/300/400	750/770/810	53550	62.27	224162	2 - 4	4.5
60	200/300/400	815/835/875	64260	74.72	268995	2 - 4	5.4
70	200/300/400	865/885/925	71400	83.02	298883	2 - 4	6.0

Instructions for correct use

Use exclusively in open air

Please make sure that flexible hose has been correctly connected rigorously in order before to the welding torch and then to gas cylinder

Ignition

1. Close both small tap and black knob clockwise
2. Open the main tap of the gas cylinder
3. Regulate Gas Pressure through the valve placed on the gas regulator (if provided)
4. Push button located on security valve (if supplied) until the hose is totally fulfilled with gas
5. Slightly open the black torch knob
6. Ignite the torch. Regulate the brass knob to obtain desired pilot flame.
7. Pull the lever to get maximum output (the black knob controls the lever gas flow)
8. In case of wind or inclement weather conditions, increase the pilot flame by turning anticlockwise the small brass knob

Turn Off

1. Close the main tap on the gas cylinder
2. Consume all the residual gas in the rubber hose
3. Close the torch taps and knobs

Safety Devices:

1. An excess flow security valve is placed on the regulator for immediate stop of gas flow in case of rubber hose damage or sudden pressure change due to external causes
2. A torch stand is provided as standard equipment in order to lay the torch when in use. This allows the torch to rest in a upright position onto the floor.



SWARAJ GAS TORCHES & BURNERS

For small brazing applications



SIEVERT

Heating tools for professionals

Classic Torch System For Soldering And Jewellery Works



Promatic System R

Sievert Pro 86 Handle 3486

- Single valved handle mainly for smaller burners
- The spindle and valve are designed to give a very exact and quick flame setting
- The spring loaded metal knob gives a precise and stable setting for the finest of flames
- All metal parts made of high quality brass
- Ergonomically designed plastic composite handle
- Delivered without hose nipple

Handle Art No.	348641
Working Pressure, bar	1,5-8
Weight, g	245
Length, mm	180
Height, mm	70
Hose Connections BSP	3/8"LH



Manual Ignition Sievert Promatic Handle 3486

Pin-point Burners



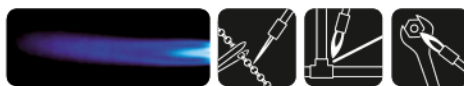
System R



Art No. 884204, 393802, 393902

- Pin-point burners with the finest flames for precision work such as gold and silver forging
- Recommended working pressure 2 bar

Pin-point Burners

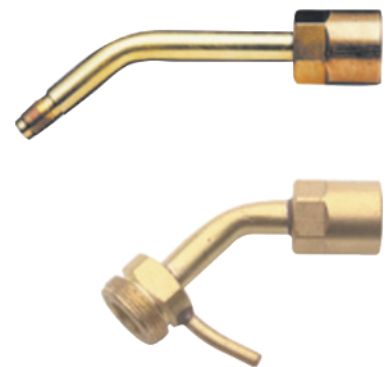


System R

Art No. 294102

- Standard burners with brush-type flames for all kinds of soft soldering/small heating applications
- Recommended working pressure 2 bar

Neck Tubes System R



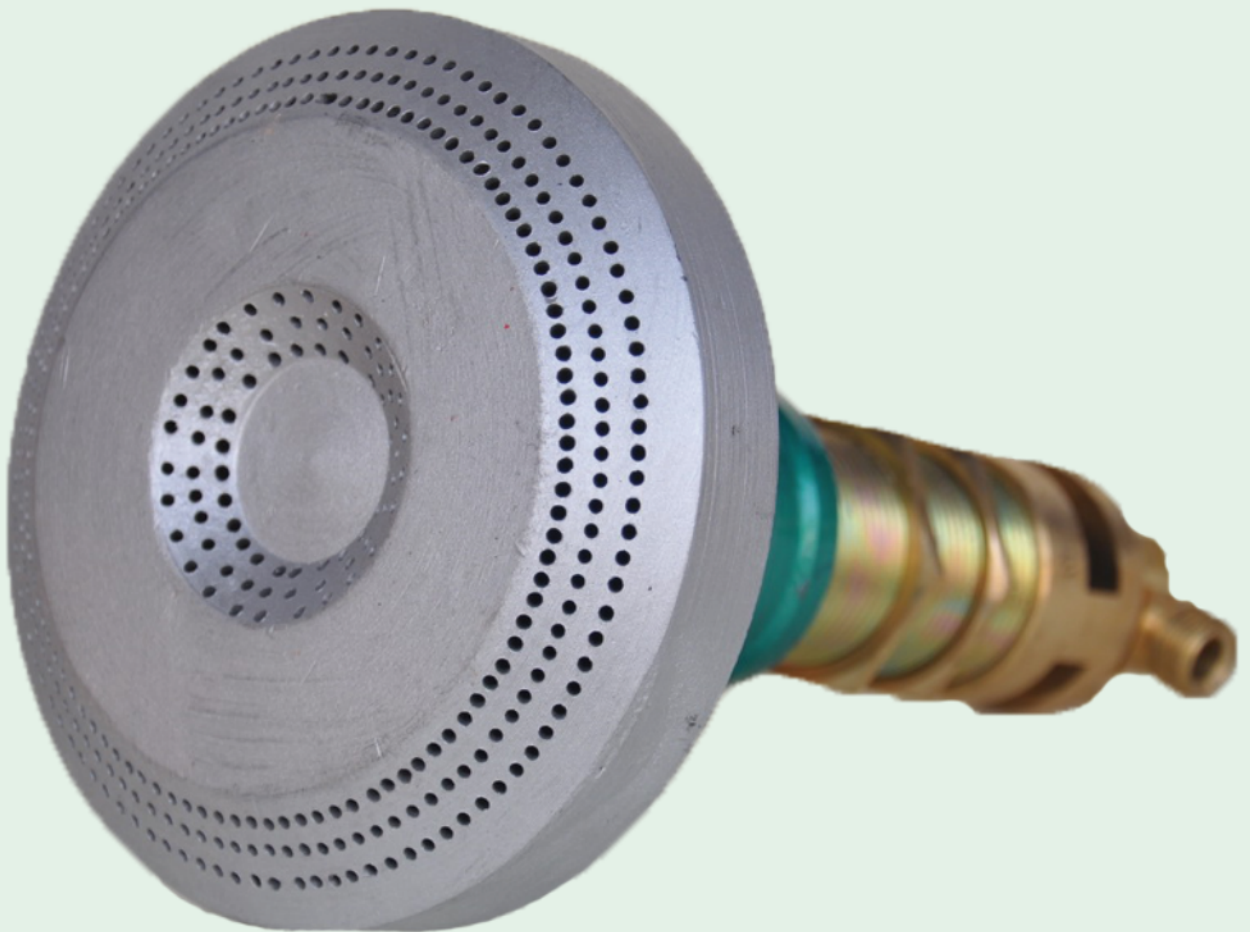
Art No. 350101
Only for pin-point burner 884204
Neck tube Length, 78mm

Art No. 351102
Neck tubes made for high quality brass
Neck tube Length, 70mm

Burner art no.	884204	393802	393902	294102
Burner diameter Ø, mm	8	17	17	28
Gas Consumption, g/h at 2 bar	20	20	70	600
Effect, kW	0,25	0,25	0,9	7,7
Soft Soldering about 400°C max. pipe diameter Ø, mm	10	10	12	60

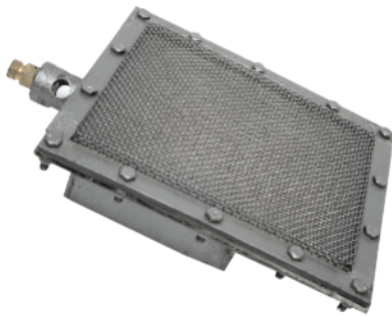
06

LPG/PNG
BURNERS





PRODUCT	Infra Red Radiant Gas Burner
PRODUCT CODE	1100
SPECIFICATIONS	Gas operated Infra Red Radiant Burner for flameless heating applications upto 350°C in CI body and SS mesh.
	Size 4"x18"
	Consumption 0.65 Kg/hr
BRANDS AVAILABLE	UE



PRODUCT	Infra Red Radiant Gas Burner for Shawarma
PRODUCT CODE	1101
SPECIFICATIONS	Gas operated Infra Red Radiant Burner for flameless heating applications upto 350°C in MS body and SS mesh or ceramic plate for commercial equipment applications
	Size 8"x9"
	Consumption 0.35 Kg/hr
BRANDS AVAILABLE	UE



PRODUCT	Infra Red Radiant Gas Burner
PRODUCT CODE	1102
SPECIFICATIONS	Gas operated Infra Red Radiant Burner for flameless heating applications upto 350°C in MS body and SS mesh or ceramic plate.
	Size 1100 mm x 110 mm
	Consumption 0.65 Kg/hr
BRANDS AVAILABLE	UE



PRODUCT	Infra Red Radiant Gas Burner
PRODUCT CODE	1103
SPECIFICATIONS	Gas operated Infra Red Radiant Burner for flameless heating applications upto 350°C in MS body and SS mesh or ceramic plate.
	Size 6"x18"
	Consumption 0.80 Kg/hr
BRANDS AVAILABLE	UE



PRODUCT	Infra Red Radiant Gas Burner for Brooder
PRODUCT CODE	1104
SPECIFICATIONS	Gas operated Infra Red Radiant Burner for flameless heating applications upto 350°C in MS body and SS mesh or ceramic plate for Poultry use to heat environment in chicken pens.
	Size 4"x8"
	Consumption 0.35 Kg/hr
BRANDS AVAILABLE	UE

Ideal heavy duty burners for bulk frying and general heating requirements of industries like pharmaceuticals, canteens, caterers, hotels and bulk cooking. They produce a powerful torch type blue flame. Available in four capacities. Flame throwing burner with top exit.

These burners are recommended to be used at pressures of 320 to 490 gm/cm²(4.5 psig), however this may vary by +25%, the heat output being varied accordingly.

Connection 3/8" BSPM compression inlet. All these burners are manufactured as per IS standards 14612. These burners could be manufactured for piped natural gas or LP gas. Consumption of fuel will depend as per model and pressure injected.

For PNG Part No. T-35 : 1022, T-50 : 1023, T-78 : 1024



PRODUCT	Torch type Burner T 22
PRODUCT CODE	1010
SPECIFICATIONS	Brass forged jet assembly with air intake coupling, 3/8 BSPM inlet mounted below heavy duty CI head and SS mesh.
	Maximum working pressure 0.5 bar
	Consumption (Kg/hr) 1 to 1.25
BRANDS AVAILABLE	UE



PRODUCT	Torch type Burner T 35
PRODUCT CODE	1020
SPECIFICATIONS	Brass forged jet assembly with air intake coupling, 3/8 BSPM inlet mounted below heavy duty CI head and SS mesh.
	Maximum working pressure 0.5 bar
	Consumption (Kg/hr) 1.58 to 1.97
BRANDS AVAILABLE	UE



PRODUCT	Torch type Burner T 50
PRODUCT CODE	1011
SPECIFICATIONS	Brass forged jet assembly with air intake coupling, 3/8 BSPM inlet mounted below heavy duty CI head and SS mesh.
	Maximum working pressure 0.5 bar
	Consumption (Kg/hr) 2.24 to 2.50
BRANDS AVAILABLE	UE



PRODUCT	Torch type Burner T 78
PRODUCT CODE	1021
SPECIFICATIONS	Brass forged jet assembly with air intake coupling, 3/8 BSPM inlet mounted below heavy duty CI head and SS mesh.
	Maximum working pressure 0.5 bar
	Consumption (Kg/hr) 3.56 to 4.20
BRANDS AVAILABLE	UE

Ideal heavy duty burners for bulk cooking and general heating requirements of industries like restaurants, hotels, caterers and bulk kitchens. Produces lovely sunlower shaped flame. Available in four capacities. Flame throwing burner with side spreading type exit.

These burners are recommended to be used at pressures of 320 gm/cm² (4.5 psig), however this may be varied by +25%, the heat output being varied accordingly.

Connection 3/8" BSPM compression inlet. All these burners are manufactured as per IS standards 14612. These burners could be manufactured for piped natural gas or LP gas. Consumption of fuel will depend as per model and pressure injected.

For PNG Part No. M-35 : 1032, M50 : 1033, M-78 : 1034



PRODUCT	Ring Type Burner M 22
PRODUCT CODE	1030
SPECIFICATIONS	Brass forged jet assembly with air intake coupling, 3/8 BSPM inlet mounted below heavy duty spring loaded CI head
	Maximum working pressure 0.4 bar
	Consumption (Kg/hr) 1
BRANDS AVAILABLE	UE



PRODUCT	Ring Type Burner M 35
PRODUCT CODE	1040
SPECIFICATIONS	Brass forged jet assembly with air intake coupling, 3/8 BSPM inlet mounted below heavy duty spring loaded CI head
	Maximum working pressure 0.4 bar
	Consumption (Kg/hr) 1.58
BRANDS AVAILABLE	UE



PRODUCT	Ring Type Burner M 50
PRODUCT CODE	1031
SPECIFICATIONS	Brass forged jet assembly with air intake coupling, 3/8 BSPM inlet mounted below heavy duty spring loaded CI head
	Maximum working pressure 0.4 bar
	Consumption (Kg/hr) 2.24
BRANDS AVAILABLE	UE



PRODUCT	Ring Type Burner M 78
PRODUCT CODE	1041
SPECIFICATIONS	Brass forged jet assembly with air intake coupling, 3/8 BSPM inlet mounted below heavy duty spring loaded CI head
	Maximum working pressure 0.4 bar
	Consumption (Kg/hr) 3.56
BRANDS AVAILABLE	UE

Ideal heavy duty burners for bulk multi purpose heating, cooking requirements of industries like restaurants, caterers, hoteliers and bulk kitchens. Produces a powerful lotus flower type blue flame from side and centre. Available in three capacities for multi purpose applications.

These burners are recommended to be used at pressures of 320 to 490 gm/cm² (4.5 psig), however this may vary by +25%, the heat output being varied accordingly.

Connection 3/8" BSPM compression inlet . All these burners are manufactured as per IS standards 14612. These burners could be manufactured for piped natural gas or LP gas. Consumption of fuel will depend as per model and pressure injected.

For PNG Part No. G-7 : 1053, G-9 : 1054, G-11 : 1055



PRODUCT	Multi Flame Sunflower Burner G 7
PRODUCT CODE	1050
SPECIFICATIONS	Brass forged jet assembly with air intake coupling, 3/8 BSPM inlet mounted below heavy duty 2 piece screwed CI head
	Maximum working pressure 0.5 bar
	Consumption (Kg/hr) 1.25
BRANDS AVAILABLE	UE



PRODUCT	Multi Flame Sunflower Burner G 9
PRODUCT CODE	1051
SPECIFICATIONS	Brass forged jet assembly with air intake coupling, 3/8 BSPM inlet mounted below heavy duty 2 piece screwed CI head
	Maximum working pressure 0.5 bar
	Consumption (Kg/hr) 2.24
BRANDS AVAILABLE	UE



PRODUCT	Multi Flame Sunflower Burner G 11
PRODUCT CODE	1052
SPECIFICATIONS	Brass forged jet assembly with air intake coupling, 3/8 BSPM inlet mounted below heavy duty 2 piece screwed CI head
	Maximum working pressure 0.5 bar
	Consumption (Kg/hr) 3.56
BRANDS AVAILABLE	UE

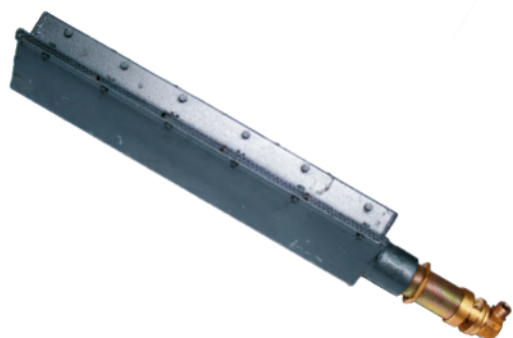
Ideal heavy duty burners for hot plate heating requirements of industries like catering, dosa restaurants, pan cakes and plate heating, produces a powerful ribbon type blue flame. Available in multi capacities with multi flame, multi purpose applications.

These burners are recommended to be used at pressures of 320 to 490 gm/cm² (4.5 psig), however this may vary by +25%, the heat output being varied accordingly. Connection 3/8" BSPM compression inlet. Consumption of fuel will depend as per model and pressure injected.

These burners can be manufactured in different sizes, lengths, entry positions and flame thicknesses. All these burners are manufactured as per IS standards 14612. These burners can be manufactured for piped natural gas or LP gas.

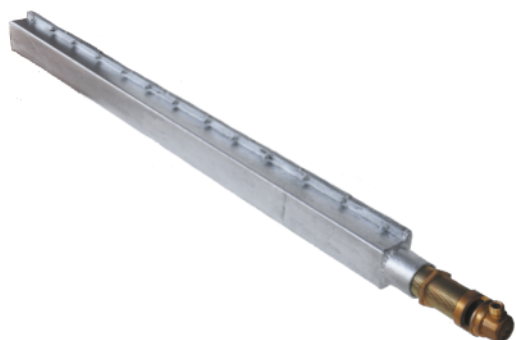


PRODUCT	V Type Double Ribbon Burner	
PRODUCT CODE	1070 to 1075 RVBE	
SPECIFICATIONS	Bottom entry brass forged jet assembly with air intake coupling, 3/8 BSPM inlet mounted with heavy duty fabricated box type combustion chamber having SS ribbon. Please specify length and entry	
	Maximum working pressure 0.3 bar	
	Consumption (RV-300 Burner 1ft long)	1.58 Kg/hr
	Consumption (RV-600 Burner 2ft long)	1.90 Kg/hr
BRANDS AVAILABLE	UE	



PRODUCT	V Type Double Ribbon Burner	
PRODUCT CODE	1070 to 1075 RVSE	
SPECIFICATIONS	Side entry brass forged jet assembly with air intake coupling, 3/8 BSPM inlet mounted with heavy duty fabricated box type combustion chamber having SS ribbon. Please specify length and entry	
	Maximum working pressure 0.3 bar	
	Consumption (RV-900 Burner 3ft long)	1.90 Kg/hr
	Consumption (RV-1200 Burner 4ft long)	2.28 Kg/hr
BRANDS AVAILABLE	UE	

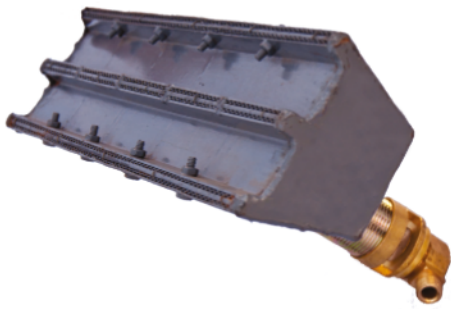
Apart from the standard models listed above this burner can be supplied in any ribbon length upto a maximum of 2100 mm (83 in.) Single Flame Ribbon Burner (L Type). We can also make them as per customers design and specifications



PRODUCT	L Type Single Ribbon Burner Box Type	
PRODUCT CODE	1070 to 1075 RLSE	
SPECIFICATIONS	Bottom or Side entry brass forged jet assembly with air intake coupling, 3/8 BSPM inlet mounted with heavy duty fabricated box type combustion chamber having SS ribbon. Please specify length and entry	
	Maximum working pressure 0.3 bar	
	Consumption (RL-300 Burner 1ft long)	1 Kg/hr
BRANDS AVAILABLE	UE	



PRODUCT	L Type Single Ribbon Burner Pencil Type	
PRODUCT CODE	1070 to 1075 RLSE	
SPECIFICATIONS	Bottom or Side entry brass forged jet assembly with air intake coupling, 3/8 BSPM inlet mounted with heavy duty fabricated pencil type combustion chamber having SS ribbon. Please specify length and entry	
	Maximum working pressure 0.3 bar	
	Consumption (RL-300 Burner 1ft long)	1 Kg/hr
BRANDS AVAILABLE	UE	



PRODUCT	W Type Triple Ribbon Burner
PRODUCT CODE	1070 to 1075 RWBE
SPECIFICATIONS	Bottom entry brass forged jet assembly with air intake coupling, 3/8 BSPM inlet mounted with heavy duty fabricated box type combustion chamber having SS ribbon. Please specify length and entry
	Maximum working pressure 0.3 bar
	Consumption 3 Kg/hr
BRANDS AVAILABLE	UE



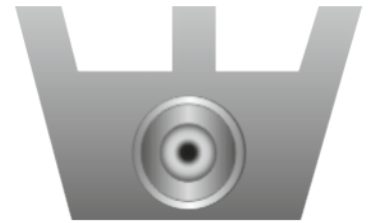
L Type



L Type



V Type



W Type

FISH TAIL BURNERS

Apart from the standard models listed above, these burners can be supplied in any ribbon length from 75 mm to 400 mm (3" to 15.75"). Side entry or bottom entry or made as per customers individual design and specifications.

Connection 3/8" BSPM compression inlet burners in this model of higher capacity can be supplied on demand

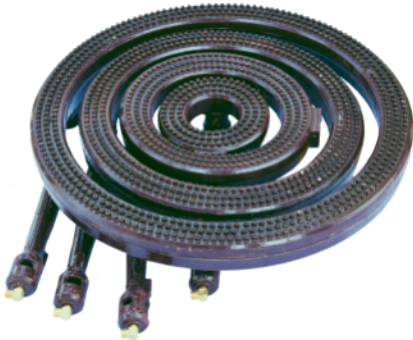


PRODUCT	Fish Tail Type Ribbon Burner
PRODUCT CODE	1060 to 1064
SPECIFICATIONS	Bottom entry brass forged jet assembly with air intake coupling, 3/8 BSPM inlet mounted with heavy duty fabricated box type combustion chamber having SS ribbon. Please specify length and entry
	Maximum working pressure 0.3 bar
	Consumption (FT-75 Burner) 0.20 Kg/hr
	Consumption (FT-150 Burner) 0.45 Kg/hr
BRANDS AVAILABLE	UE

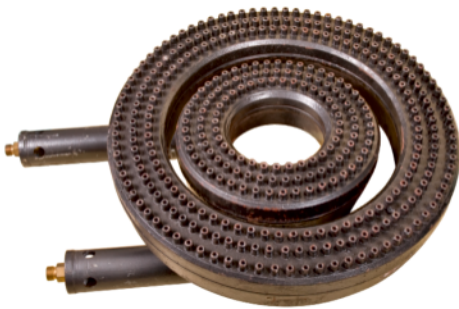


PRODUCT	Fish Tail Type Ribbon Burner
PRODUCT CODE	1060 to 1064
SPECIFICATIONS	Bottom entry brass forged jet assembly with air intake coupling, 3/8 BSPM inlet mounted with heavy duty fabricated box type combustion chamber having SS ribbon. Please specify length and entry
	Maximum working pressure 0.3 bar
	Consumption (FT-230 Burner) 0.65 Kg/hr
	Consumption (FT-300 Burner) 0.90 Kg/hr
BRANDS AVAILABLE	UE

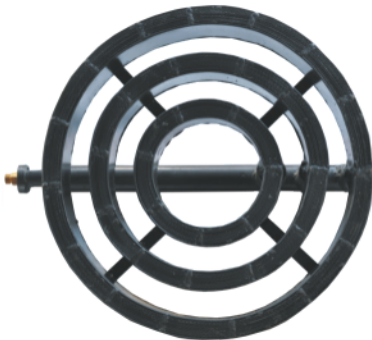
Ideal heavy duty burners for slow and constant heating over long periods. Available in various capacities for multi purpose applications. These burners are recommended to be used at pressures of 320 to 490 gm/cm² (4.5 psig), however this may vary by +25%, the heat output being varied accordingly. Connection 3/8" BSPM compression inlet . All these burners are manufactured as per IS standards 14612. Consumption of fuel will depend as per model and pressure injected.



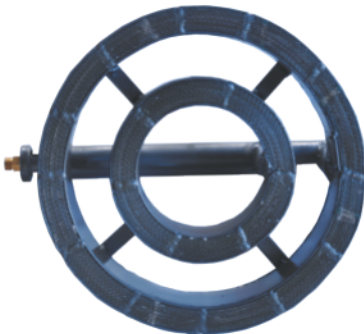
PRODUCT	Multi Ring Low Pressure Dum Biryani Burner In CI Body
PRODUCT CODE	1106 B / 1106 C
SPECIFICATIONS	Rated operating pressure 0.03 bar having individual inlet connections 3/8 BSPM
	Available in 1, 2, 3, 4 rings with individual control.
	Consumption (3 Ring Burner) 1 Kg/hr
BRANDS AVAILABLE	UE



PRODUCT	Multi Ring Low Pressure Dum Biryani Burner In CI Body
PRODUCT CODE	1106
SPECIFICATIONS	Rated operating pressure 0.03 bar having individual inlet connections 3/8 BSPM
	Available in 1, 2, 3, 4 rings with individual control.
	Consumption (2 Ring Burner) 0.65 Kg/hr
BRANDS AVAILABLE	UE



PRODUCT	Multi Ring Low Pressure Dum Biryani Burner in Metal Body
PRODUCT CODE	1110
SPECIFICATIONS	Rated operating pressure 1 bar having common inlet connection 3/8 BSPM
	3 ring burner with common inlet
	Pressure 1 Bar (15 PSI)
	Consumption 3 Kg/hr (35000 kcal/hr)
BRANDS AVAILABLE	UE



PRODUCT	Multi Ring Low Pressure Dum Biryani Burner in Metal Body
PRODUCT CODE	1108
SPECIFICATIONS	Rated operating pressure 1 bar having common inlet connection 3/8 BSPM
	2 ring burner with common inlet
	Pressure 1 Bar (15 PSI)
	Consumption 2.3 Kg/hr (26000 kcal/hr)
BRANDS AVAILABLE	UE



PRODUCT	Multi Ring Low Pressure Dum Biryani Burner in Metal Body
PRODUCT CODE	1109
SPECIFICATIONS	Rated operating pressure 1 bar having individual inlet connection 3/8 BSPM
	3 ring burner with individual inlet
	Pressure 1 Bar (15 PSI)
	Consumption 3 Kg/hr (35000 kcal/hr)
BRANDS AVAILABLE	UE

Ideal heavy duty burners for bulk cooking and general heating requirements of industries like restaurants, hotels, caterers and bulk kitchens. Produces lovely carnation flower shaped flame. Available in four capacities. Flame throwing burner with side spreading type exit.

These burners are recommended to be used at pressures of 320 gm/cm² (4.5 psig), however this may be varied by +25%, the heat output being varied accordingly. Consumption of fuel will depend as per model and pressure injected.

Connection 3/8" BSPM compression inlet. All these burners are manufactured as per IS standards 14612. These burners could be manufactured for piped natural gas or LP gas

For PNG Part No. 1042 for M100, 1043 for M140



PRODUCT	High Pressure Ring Type Bulk Heating Burner M 100
PRODUCT CODE	1042
SPECIFICATIONS	Side entry brass forged jet assembly with air intake coupling, 3/8 BSPM inlet mounted on pipe fitting with MS rings in copper or SS wire screwed atop elbow
	Maximum working pressure 0.5 bar
	Consumption 4.8 Kg/hr (65 Kw)
BRANDS AVAILABLE	UE



PRODUCT	High Pressure Ring Type Bulk Heating Burner M 140
PRODUCT CODE	1043
SPECIFICATIONS	Side entry brass forged jet assembly with air intake coupling, 3/8 BSPM inlet mounted on pipe fitting with MS rings in copper or SS wire screwed atop elbow
	Maximum working pressure 0.5 bar
	Consumption 6.03 Kg/hr (80 Kw)
BRANDS AVAILABLE	UE

Imported fully automatic LPG - NG burners for furnaces, powder coating, bulk heating etc used in conversion from other fuels to LPG / NG mounted in halwai farsan bhatti



PRODUCT	Automatic monoblock burners
PRODUCT CODE	ABG 35
SPECIFICATIONS	35 Kw rating single solenoid burner with imported relay, PLC, Solenoid valve, Ignition Flame Failure Device and optional Temperature Controller
	Maximum working pressure 100 mbar
	Maximum working pressure 100 mbar
	Consumption 2.64 Kg/hr (35 Kw)
BRANDS AVAILABLE	PYRAMID



PRODUCT	Automatic monoblock burners
PRODUCT CODE	ABG 65 / ABG 100
SPECIFICATIONS	65 / 100 Kw rating double solenoid burner with imported relay, PLC, Solenoid valve, Ignition Flame Failure Device and optional Temperature Controller
	Maximum working pressure 100 mbar
	Consumption 4.90 Kg/hr (65 Kw)
	7.54 Kg/hr (100 Kw)
BRANDS AVAILABLE	PYRAMID

Model No. ST-2.5 / ST-5 / ST-10 / ST-20 / ST-40 / ST-60 / ST-80 / ST-160

Part No. 1080 / 1081 / 1082 / 1083 / 1084 / 1085 / 1086 / 1087

These burners produce short turbulent oxidizing flames ideal for high intensity weld preheating, wherever hydrogen cracking is to be avoided. It can also be used as an immersion heater or a space heater where secondary air is low. These burners can be made in longer lengths.

Model No.: S-2.5 / S-5 / S-10 / S-20 / S-40 / S-60 / S-80 / S-160

Part No. 1090 / 1091 / 1092 / 1093 / 1094 / 1095 / 1096 / 1097

These burners produce long, reducing, low velocity flames for an excellent transfer efficiency in heating dies, moulds, plates, castings and large fabricated components. These burners can be made in longer lengths. Connection 3/8" BSPM compression inlet. Burners in this model of higher capacity can be supplied on demand

Consumption of fuel will depend as per model and pressure injected.

ST TYPE



S TYPE



SPECIFICATIONS 'S' TYPE

Model No.	Length	Head Diameter	Working Pressure		Consumption per Hour		Rated Heat Output	
			Min.	Max.	Min.	Max.	Min.	Max.
S-20	210 mm	33 mm	0.14 Kg/cm ²	1.40 Kg/cm ²	0.68 Kg	1.89 Kg	7,560 kcal/hr	21,100 kcal/hr
	8.27 in	1.30 in	2.0 psig	20.0 psig	1.5 lbs	4.2 lbs	30,000 btu/hr	83,600 btu/hr
S-40	268 mm	43 mm	0.14 Kg/cm ²	1.40 Kg/cm ²	1.35 Kg	3.83 Kg	15,100 kcal/hr	42,840 kcal/hr
	10.55 in	1.70 in	2.0 psig	20.0 psig	3.0 lbs	8.5 lbs	60,000 btu/hr	1,70,000 btu/hr
S-60	300 mm	50 mm	0.14 Kg/cm ²	1.40 Kg/cm ²	2.00 Kg	5.70 Kg	22,650 kcal/hr	64,260 kcal/hr
	12.00 in	2.0 in	2.0 psig	20.0 psig	4.5 lbs	11.25 lbs	90,000 btu/hr	2,55,000 btu/hr
S-80	383 mm	60 mm	0.14 Kg/cm ²	1.40 Kg/cm ²	2.70 Kg	7.61 Kg	30,240 kcal/hr	84,670 kcal/hr
	15.08 in	2.36 in	2.0 psig	20.0 psig	6.0 lbs	16.9 lbs	1,20,000 btu/hr	3,36,000 btu/hr
S-160	483 mm	79 mm	0.14 Kg/cm ²	1.40 Kg/cm ²	5.40 Kg	15.21 Kg	60,500 kcal/hr	1,70,000 kcal/hr
	19.02 in	3.11 in	2.0 psig	20.0 psig	12.0 lbs	33.8 lbs	2,40,000 btu/hr	6,73,000 btu/hr



S Type
Long Thin Flame

SPECIFICATIONS FOR 'ST' TYPE

Model No.	Length	Head Diameter	Working Pressure		Consumption per Hour		Rated Heat Output	
			Min.	Max.	Min.	Max.	Min.	Max.
ST-2.5	149 mm	28 mm	0.14 Kg/cm ²	1.40 Kg/cm ²	0.09 Kg	0.24 Kg	1,000 kcal/hr	2,660 kcal/hr
	5.87 in	1.10 in	2.0 psig	20.0 psig	0.20 lbs	0.53 lbs	4,000 btu/hr	10,550 btu/hr
ST-5	169 mm	32 mm	0.14 Kg/cm ²	1.40 Kg/cm ²	0.17 Kg	0.48 Kg	1,855 kcal/hr	5,290 kcal/hr
	6.65 in	1.26 in	2.0 psig	20.0 psig	0.37 lbs	1.06 lbs	7,360 btu/hr	21,000 btu/hr
ST-10	204 mm	41 mm	0.14 Kg/cm ²	1.40 Kg/cm ²	0.34 Kg	0.95 Kg	3,750 kcal/hr	10,580 kcal/hr
	8.03 in	1.61 in	2.0 psig	20.0 psig	0.75 lbs	2.11 lbs	14,900 btu/hr	42,000 btu/hr
ST-20	250 mm	48 mm	0.14 Kg/cm ²	1.40 Kg/cm ²	0.68 Kg	1.89 Kg	7,560 kcal/hr	21,100 kcal/hr
	9.84 in	1.89 in	2.0 psig	20.0 psig	1.50 lbs	4.20 lbs	30,000 btu/hr	83,600 btu/hr
ST-40	318 mm	58 mm	0.14 Kg/cm ²	1.40 Kg/cm ²	1.35 Kg	3.83 Kg	15,100 kcal/hr	42,840 kcal/hr
	12.52 in	2.28 in	2.0 psig	20.0 psig	3.00 lbs	8.50 lbs	60,000 btu/hr	1,70,000 btu/hr
ST-60	300 mm	50 mm	0.14 Kg/cm ²	1.40 Kg/cm ²	2.00 Kg	5.70 Kg	22,650 kcal/hr	64,260 kcal/hr
	12.00 in	2.0 in	2.0 psig	20.0 psig	4.5 lbs	11.25 lbs	90,000 btu/hr	2,55,000 btu/hr
ST-80	438 mm	76 mm	0.14 Kg/cm ²	1.40 Kg/cm ²	2.70 Kg	7.61 Kg	30,250 kcal/hr	84,670 kcal/hr
	17.24 in	2.99 in	2.0 psig	20.0 psig	6.00 lbs	16.90 lbs	1,20,000 btu/hr	3,36,000 btu/hr
ST-160	540 mm	88 mm	0.14 Kg/cm ²	1.40 Kg/cm ²	5.40 Kg	15.21 Kg	60,500 kcal/hr	1,70,000 kcal/hr
	21.62 in	3.46 in	2.0 psig	20.0 psig	12.00 lbs	33.80 lbs	2,40,000 btu/hr	6,73,000 btu/hr



ST Type
Short Thick Flame

These burners could be manufactured for piped natural gas or LP gas

07

DOMESTIC EQUIPMENT





PRODUCT	LPG Iron Press - Brass Bottom
PRODUCT CODE	LPGIB
SPECIFICATIONS	LPG operated iron at unreduced pressure. Combustion within iron box chamber. Consumes 1 kg of gas in 22 hours. Supplied with hose and adapter.
	Maximum working pressure 5 bar
BRANDS AVAILABLE	IRINA



PRODUCT	Portable Cooking Stove
PRODUCT CODE	CTS
SPECIFICATIONS	Stainless steel ring type burner model with pan supports and control valve.
	Operates at unreduced pressure. Suitable for 25.6 mm SC valve. 5 kg cylinder or 14 kg cylinder.
	Maximum working pressure 5 bar
BRANDS AVAILABLE	PORTACOOK



PRODUCT	LPG Hose Suraksha
PRODUCT CODE	PGOH / PGBH
SPECIFICATIONS	Suraksha hose 8 mm in roll form as per standard specifications.
	Working pressure 10 bar (Orange color) - PGOH
	Working pressure 25 bar (Black color) - PGBH
BRANDS AVAILABLE	PUNEGAS / UE SHURAKSHA



PRODUCT	Gas Hose Cutter
PRODUCT CODE	STC
SPECIFICATIONS	Forged steel Suraksha wire braided tube cutter having computerised machine sharpened blades for prolonged usage.
BRANDS AVAILABLE	MEGA



PRODUCT	'O' Ring Leakage Tester
PRODUCT CODE	LDP
SPECIFICATIONS	Aluminium die cast body with acrylic window for leakage inspection suitable for 25.6 mm SC valve cylinders of VOT type. 5 /14 / 19 kg
BRANDS AVAILABLE	VALTEST



PRODUCT	'O' Ring Remover for S.C Cylinder Valve
PRODUCT CODE	COR
SPECIFICATIONS	Screwdriver handle heat treated steel pincher shape O ring remover for SC valve cylinders.
BRANDS AVAILABLE	REMO



PRODUCT	'O' Ring Fitter for S.C Cylinder Valve
PRODUCT CODE	COI
SPECIFICATIONS	Aluminium die cast body easy to use O ring fitter for or SC valve cylinders of 25.6 mm
BRANDS AVAILABLE	RIFIT



PRODUCT	Online Regulator
PRODUCT CODE	1389
SPECIFICATIONS	LP Online Regulator - FECV inlet 8 mm nozzle outlet. Inlet pressure 7 bar, outlet pressure 30 mbar, flow 2kg/hr.
BRANDS AVAILABLE	SAFEGAS



PRODUCT	Online Regulator
PRODUCT CODE	1390
SPECIFICATIONS	Low pressure online regulator with 3/8" BSPF inlet and 3/8" BSPM outlet. Inlet pressure 7 bar, Outlet pressure 30 mbar, flow 2 kgs/hr.
BRANDS AVAILABLE	SAFEGAS



Legally sold 25.6 mm regulator for use with SC Valve of any size cylinder for 25 to 45 mbar pressure outlet

PRODUCT	Commercial Adjustable Low Pressure Regulator VHPR LP
PRODUCT CODE	1334A
SPECIFICATIONS	Multi Point Lock High Pressure Regulator used on LPG cylinder valve
	Adjustable flow control
	Inlet as per BSEN : 12864
	Inlet size : 25.6 mm Outlet size : Hose nozzle 8 mm
	Inlet pressure max : 17 kg/cm ² Outlet pressure from : 25 mbar to 45 mbar
	Flow max : 2 kgs/hr
BRANDS AVAILABLE	TVL



PRODUCT	High Pressure Regulator VHPR HP
PRODUCT CODE	1333A
SPECIFICATIONS	Multi Point Lock High Pressure Regulator used on LPG cylinder valve
	Adjustable flow control
	Inlet as per BSEN : 12864
	Inlet size : 25.6 mm Outlet size : 3/8" BSPM / Hose nozzle 8 mm
	Inlet pressure max : 17 kg/cm ²
	Outlet pressure from : 0.05 mbar to 2 bar
	Flow max : 8 kgs/hr
BRANDS AVAILABLE	AGC



PRODUCT	High Pressure Regulator VHPR HP
PRODUCT CODE	1333
SPECIFICATIONS	Multi Point Lock High Pressure Regulator used on LPG cylinder valve
	Adjustable flow control
	Inlet as per BSEN : 12864
	Inlet size : 25.6 mm Outlet size : 3/8" BSPM / Hose nozzle 8 mm
	Inlet pressure max : 17 kg/cm ²
	Outlet pressure from : 0.05 mbar to 2 bar
	Flow max : 8 kgs/hr
BRANDS AVAILABLE	KOSAN



Maharashtra Multi Distributors Ltd

We are now Authorized Vendors of BPCL, HPCL & IOCL for LPG & Natural Gas Fittings



Vendor No.
0000174099

Vendor No.
27061882

Vendor No.
0013258560

**Technical Catalog can be
downloaded from our websites
www.mahamulti.com
www.lpgindia.com**

Department	Email	Phone Number
Franchise, Technicals & Training	jns@mahamulti.com	+91 9823031262
Bulk Orders / Dealers	dealersales@mahamulti.com	+91 9637634488
Direct Wholesale	directsales@mahamulti.com	+91 9765935566
OEM Customers & Certification	retail@mahamulti.com	+91 9168184488
Drawings & After Sales	service@mahamulti.com	+91 8956083322
Exports, Gas Trains & Automation	sales@mahamulti.com	+91 9325434433
Domestic Products, Counter Sale- Auto LPG / CNG	domestic@mahamulti.com	+91 9607108811 +91 7030713366
Despatches	despatch@mahamulti.com	+91 9823344987
Stores	stores@mahamulti.com	020-26872777/888/999
Billing	billing@mahamulti.com	020-26872777/888/999
Accounts Assistance	docs@mahamulti.com	+91 8806844333

PUBLICATION HISTORY

1st Edition	January 1998
2nd Edition	January 1999
3rd Edition	July 1999
4th Edition	April 2001
5th Edition	September 2004
6th Edition	September 2005
7th Edition	June 2009
8th Edition	January 2010
9th Edition	May 2011
10th Edition	January 2013
11th Edition	January 2015
12th Edition	March 2016
13th Edition	June 2017
14th Edition	January 2019
15th Edition	January 2020
16th Edition	January 2022
17th Edition	January 2023

GasTechApp



GAS TECH

All in One tool app

- Learn How to compare price of Various fuels with LPG & Natural Gas-Price & efficiency parameters.
- Calculate flow of Gas in kg/hr from the reading of Gas Meter which is in AM3/Hr.
- Download Technical Catalog and product catalog.
- Refer this information to your friends.
- Solve your Problems and queries related to your Gas Business.

Scan QR Code to
Download GasTechApp
For Android Device



Scan QR Code to
Download Gas TechApp
For Apple Iphone Device





MAHARASHTRA
MULTI DISTRIBUTORS LTD



● Works : *Plot No. 98/A-30, Hadapsar Industrial Estate,
Behind Kirloskar Pneumatic,
Hadapsar, Pune (MH) 411 013 India.
Email id: retail@mahamulti.com
Contact- +91 9168184488*

● Retail Outlet : *11, Kaveri Apartment, 896 Nana Peth,
(Opp. HDFC Bank - Quarter Gate branch),
Pune (MH) 411 002 India.
Email id: domestic@mahamulti.com
Contact- +91 7030713366 / 9607108811*